



ELECTRONIC COPY

LABORATORY GROWN DIAMOND REPORT

October 13, 2022	
IGI Report Number	LG551276797
Description	LABORATORY GROWN DIAMOND
Shape and Cutting Style	CUT CORNERED RECTANGULAR MODIFIED BRILLIANT
Measurements	8.48 X 5.97 X 4.07 MM

GRADING RESULTS

Carat Weight	1.77 CARAT
Color Grade	G
Clarity Grade	VS 1

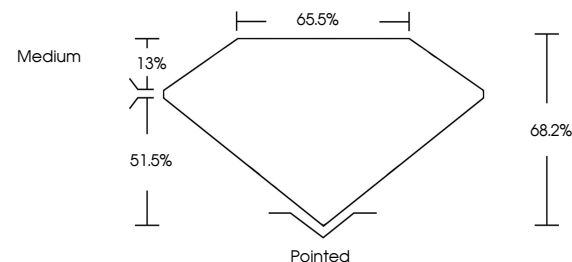
ADDITIONAL GRADING INFORMATION

Polish	EXCELLENT
Symmetry	EXCELLENT
Fluorescence	NONE

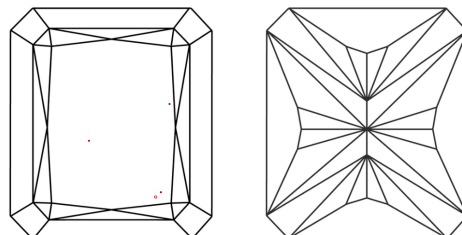
Inscription(s) **LABGROWN  LG551276797**
 Comments: This Laboratory Grown Diamond was created by Chemical Vapor Deposition (CVD) growth process and may include post-growth treatment.
 Type IIa

LG551276797

PROPORTIONS



CLARITY CHARACTERISTICS

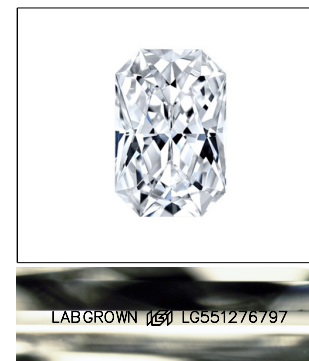


KEY TO SYMBOLS

Red symbols indicate internal characteristics.
Green symbols indicate external characteristics.

GRADING SCALES

COLOR GRADING SCALE	CL		NC	FT	VLT	LT
	COLORLESS D-F		NEAR COLORLESS G-J	FAINT K-M	VERY LIGHT N-R	LIGHT S-Z
CLARITY (10x) GRADING SCALE	FL	IF	VVS	VS	SI	I
	FLAWLESS INTERNALLY FLAWLESS		VERY VERY SLIGHTLY INCLUDED	VERY SLIGHTLY INCLUDED	SLIGHTLY INCLUDED	INCLUDED

LASERSCRIBESM

Sample Image Used



© IGI 2020, International Gemological Institute

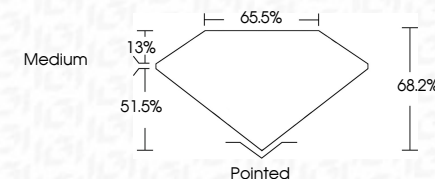
FD - 10 20

www.igi.org

LABORATORY GROWN DIAMOND REPORT

October 13, 2022	
IGI Report Number	LG551276797
Description	LABORATORY GROWN DIAMOND
Shape and Cutting Style	CUT CORNERED RECTANGULAR MODIFIED BRILLIANT
Measurements	8.48 X 5.97 X 4.07 MM

Carat Weight	1.77 CARAT
Color Grade	G
Clarity Grade	VS 1



ADDITIONAL GRADING INFORMATION

Polish	EXCELLENT
Symmetry	EXCELLENT
Fluorescence	NONE
Inscription(s)	LABGROWN (151) LG551276797

Comments: This Laboratory Grown Diamond was created by Chemical Vapor Deposition (CVD) growth process and may include post-growth treatment.
Type IIa



October 13, 2022	CU Report No. LG5512/6797	1,77 CARAT	Polished
GI COVERED BECI, MODIFIED	Color Grade	G	EXCELLENT
2.01 X 5.57 X 4.07 MM	Clarity Grade	VS 1	EXCELLENT
	Depth	68.2%	NONE
	Table	65.5%	LASER GROWN (LGR)
	Grade	Medium	LG5512/6797
	Culet		
	Symmetry		
	Fluorescence (inclusions)		
	Comments:		
	This Laboratory Grown Diamond was created using a High Pressure High Temperature (HPHT) growth process and may include post-growth treatment.		
	Type Ila		