



ELECTRONIC COPY

LABORATORY GROWN DIAMOND REPORT

October 12, 2022	
IGI Report Number	LG551277622
Description	LABORATORY GROWN DIAMOND
Shape and Cutting Style	ROUND BRILLIANT
Measurements	9.54 - 9.56 X 5.74 MM

GRADING RESULTS

Carat Weight	3.26 CARATS
Color Grade	F
Clarity Grade	VS 1
Cut Grade	IDEAL

ADDITIONAL GRADING INFORMATION

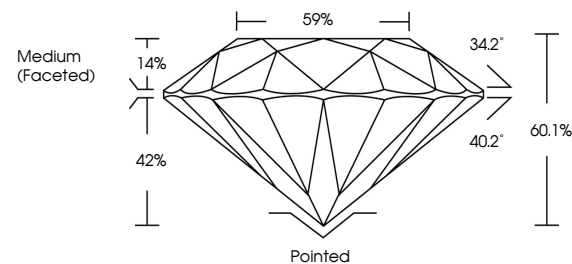
Polish	EXCELLENT
Symmetry	EXCELLENT
Fluorescence	NONE

Inscription(s) LABGROWN 16 LG551277622

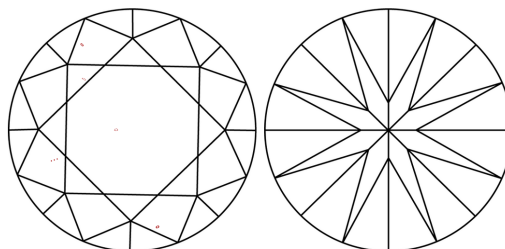
Comments: This Laboratory Grown Diamond was created by Chemical Vapor Deposition (CVD) growth process and may include post-growth treatment.
Type IIa

LG551277622

PROPORTIONS



CLARITY CHARACTERISTICS

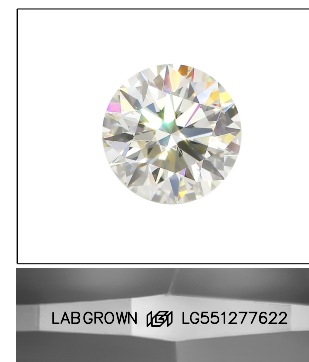


KEY TO SYMBOLS

Red symbols indicate internal characteristics.
Green symbols indicate external characteristics.

GRADING SCALES

COLOR GRADING SCALE	CL		NC	FT	VLT	LT
	COLORLESS D-F		NEAR COLORLESS G-J	FAINT K-M	VERY LIGHT N-R	LIGHT S-Z
CLARITY (10x) GRADING SCALE	FL	IF	VVS	VS	SI	I
	FLAWLESS INTERNALLY FLAWLESS		VERY VERY SLIGHTLY INCLUDED	VERY SLIGHTLY INCLUDED	SLIGHTLY INCLUDED	INCLUDED

LASERSCRIBESM

Sample Image Used

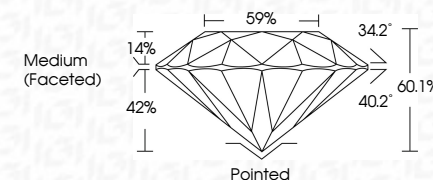


© IGI 2020, International Gemological Institute

FD - 10 20

LABORATORY GROWN DIAMOND REPORT

October 12, 2022	
IGI Report Number	LG551277622
Description	LABORATORY GROWN DIAMOND
Shape and Cutting Style	ROUND BRILLIANT
Measurements	9.54 - 9.56 X 5.74 MM
GRADING RESULTS	
Carat Weight	3.26 CARATS
Color Grade	F
Clarity Grade	VS 1
Cut Grade	IDEAL



ADDITIONAL GRADING INFORMATION

Polish	EXCELLENT
Symmetry	EXCELLENT
Fluorescence	NONE
Inscription(s)	LABGROWN (USA) LG551277622

Comments: This Laboratory Grown Diamond was created by Chemical Vapor Deposition (CVD) growth process and may include post-growth treatment. Type IIa



October 12, 2022	GI Report No. LG55127402	3.26 CARATS	F	VS 1	Polished	Excellent	Excellent	NONE	LARGE (1650/1650)	<p>This Laboratory Grown Diamond was created by Chemical Vapor Deposition (CVD) growth process and may include some surface treatment.</p> <p>Type Ia</p>	
	SOUND REPORT			IDEAL							
	9.54 - 9.55 X 5.74 MM			61.1%							
	Carat Weight			59%							
	Color Grade			Medium (Faced)					1650/127402		
				Clarity Grade		Culet	Polish	Symmetry	Fluorescence	Inscriptions	Comments:
				Color Grade							
				Depth							
				Table							
				Girdle							

Comments: This Laboratory Grown Diamond was generated by Chemical Vapor Deposition (CVD) growth process and may include post-growth treatment.