



ELECTRONIC COPY

LABORATORY GROWN DIAMOND REPORT

October 12, 2022	
IGI Report Number	LG551277631
Description	LABORATORY GROWN DIAMOND
Shape and Cutting Style	ROUND BRILLIANT
Measurements	11.03 - 11.08 X 6.83 MM

GRADING RESULTS

Carat Weight	5.24 CARATS
Color Grade	G
Clarity Grade	VS 1
Cut Grade	IDEAL

ADDITIONAL GRADING INFORMATION

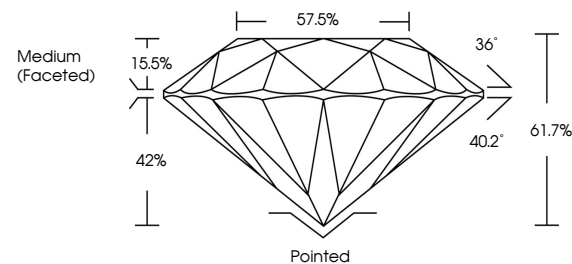
Polish	EXCELLENT
Symmetry	EXCELLENT
Fluorescence	NONE

Inscription(s) LABGROWN LG551277631

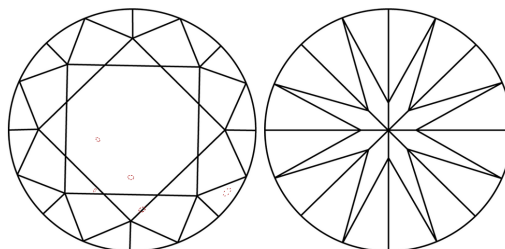
Comments: This Laboratory Grown Diamond was created by Chemical Vapor Deposition (CVD) growth process and may include post-growth treatment.
Type IIa

LG551277631

PROPORTIONS



CLARITY CHARACTERISTICS

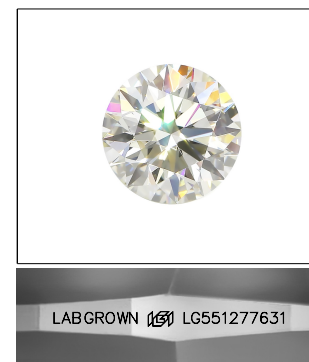


KEY TO SYMBOLS

Red symbols indicate internal characteristics.
Green symbols indicate external characteristics.

GRADING SCALES

COLOR GRADING SCALE	CL		NC	FT	VL	LT
	COLORLESS D-F		NEAR COLORLESS G-J	FAINT K-M	VERY LIGHT N-R	LIGHT S-Z
CLARITY (10x) GRADING SCALE	FL	IF	VVS	VS	SI	I
	FLAWLESS INTERNALLY FLAWLESS		VERY VERY SLIGHTLY INCLUDED	VERY SLIGHTLY INCLUDED	SLIGHTLY INCLUDED	INCLUDED

LASERSCRIBESM

Sample Image Used

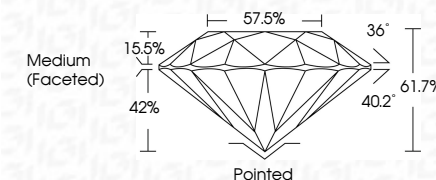


© IGI 2020, International Gemological Institute

FD - 10 20

LABORATORY GROWN DIAMOND REPORT

October 12, 2022	
IGI Report Number	LG551277631
Description	LABORATORY GROWN DIAMOND
Shape and Cutting Style	ROUND BRILLIANT
Measurements	11.03 - 11.08 X 6.83 MM
GRADING RESULTS	
Carat Weight	5.24 CARATS
Color Grade	G
Clarity Grade	VS 1
Cut Grade	IDEAL



ADDITIONAL GRADING INFORMATION

Polish	EXCELLENT
Symmetry	EXCELLENT
Fluorescence	NONE
Inscription(s)	LABGROWN (15) LG551277631

Comments: This Laboratory Grown Diamond was created by Chemical Vapor Deposition (CVD) growth process and may include post-growth treatment.
Type IIa



Date:	October 12, 2022
Report No.:	L655127431
Product Name:	SOUND BRILLIANT
Color Code:	11-08 X 6.83 MM
Carat Weight:	5.24 CARATS
Cut Grade:	G
Clarity Grade:	VS 1
Color Grade:	IJ54L
Depth:	61.7%
Table:	57.5%
Fluorescence:	Medium (Faint)
Culet:	Pointed
Polish:	EXCELLENT
Symmetry:	EXCELLENT
Fluorescence:	NONE
Telephone(s):	LASGOWN (69) 1-850-127-7631
Comments:	This Laboratory Grown Diamond was created by Chemical Vapor Deposition (CVD) growth process and may include some surface treatment.
Type I(a):	

Comments:
This Laboratory Grown Diamond was created by Chemical Vapor Deposition (CVD) growth process and may include post-growth treatment.