



ELECTRONIC COPY

LABORATORY GROWN DIAMOND REPORT

October 14, 2022

IGI Report Number **LG551277908**

Description	LABORATORY GROWN DIAMOND
-------------	-----------------------------

Shape and Cutting Style **OVAL BRILLIANT**

Measurements 9.70 X 7.14 X 4.42 MM

GRADING RESULTS

Carat Weight 2.00 CARATS

Color Grade H

Clarity Grade VS 1

ADDITIONAL GRADING INFORMATION

Polish EXCELLENT

Symmetry **EXCELLENT**

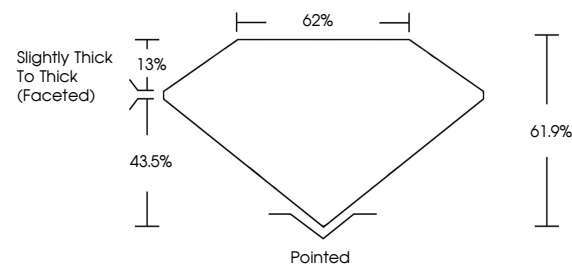
Fluorescence **NONE**

Inscription(s) LABGROWN LG551277908

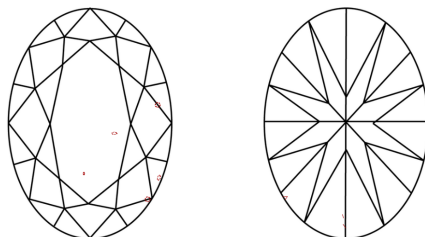
Comments: This Laboratory Grown Diamond was created by Chemical Vapor Deposition (CVD) growth process and may include post-growth treatment.
Type IIa

LG551277908

PROPORTIONS



CLARITY CHARACTERISTICS

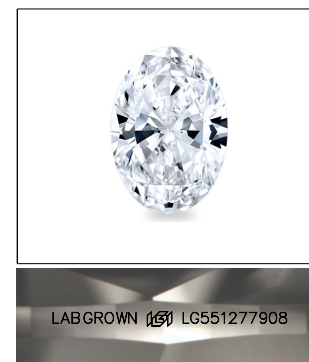


KEY TO SYMBOLS

Red symbols indicate internal characteristics.
Green symbols indicate external characteristics.

GRADING SCALES

COLOR GRADING SCALE	CL		NC	FT	VL	LT
	COLORLESS D-F		NEAR COLORLESS G-J	FAINT K-M	VERY LIGHT N-R	LIGHT S-Z
CLARITY (10x) GRADING SCALE	FL	IF	VVS	VS	SI	I
	FLAWLESS INTERNALLY FLAWLESS		VERY VERY SLIGHTLY INCLUDED	VERY SLIGHTLY INCLUDED	SLIGHTLY INCLUDED	INCLUDED

LASERSCRIBESM

Sample Image Used



© IGI 2020, International Gemological Institute

FD - 10 20

LABORATORY GROWN DIAMOND REPORT

October 14, 2022	
IGI Report Number	LG551277908
Description	LABORATORY GROWN

Shape and Cutting Style **OVAL BRILLIANT**

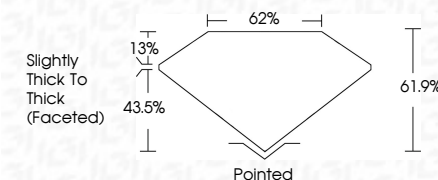
Measurements **9.70 X 7.14 X 4.42 MM**

GRADING RESULTS

Carat Weight **2.00 CARATS**

Color Grade H

Clarity Grade VS 1



ADDITIONAL GRADING INFORMATION

Polish **EXCELLENT**Symmetry **EXCELLENT**Fluorescence **NONE**

Inscription(s) LABGROWN 15 LG551277908

Comments: This Laboratory Grown Diamond was created by Chemical Vapor Deposition (CVD) growth process and may include post-growth treatment.
Type IIa



October 14, 2022	C/ Report No. LG55127798		2.00 CARATS	
GIA REPORT	GIA BRILLIANT		H	
20.70 X 7.14 X 4.42 MM	Color Grade		VS 1	
	Clarity Grade		61%	
	Depth		62%	
	Table		Slightly Thick To Thick (faceted)	
	Girdle		Pointed	
	Culet		EXCELLENT	
	Polish		EXCELLENT	
	Symmetry		NONE	
	Fluorescence (inclusions)		LASER GROWN (GSI) LG55127798	
	Comments:			
	This Laboratory Grown Diamond was examined using Laser Assisted Growth (LAWG) technology. This is a natural (CVD) growth process and may include post-growth treatment. Type Ila			