



ELECTRONIC COPY

LABORATORY GROWN DIAMOND REPORT

October 14, 2022
 IGI Report Number **LG551278751**
 Description **LABORATORY GROWN
DIAMOND**
 Shape and Cutting Style **ROUND BRILLIANT**
 Measurements **10.09 - 10.11 X 6.08 MM**

GRADING RESULTS

Carat Weight **3.80 CARATS**
 Color Grade **G**
 Clarity Grade **VS 1**
 Cut Grade **IDEAL**

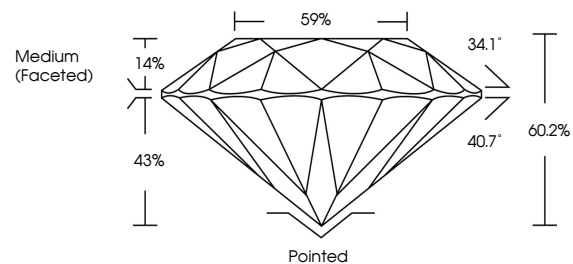
ADDITIONAL GRADING INFORMATION

Polish **EXCELLENT**
 Symmetry **EXCELLENT**
 Fluorescence **NONE**
 Inscription(s) **LABGROWN (IGI) LG551278751**

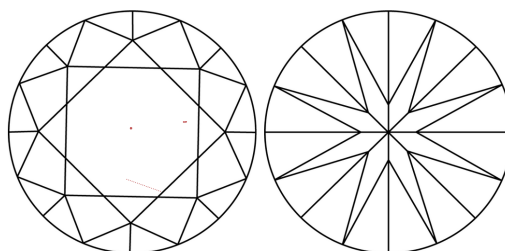
Comments: HEARTS & ARROWS
 This Laboratory Grown Diamond was created by
 Chemical Vapor Deposition (CVD) growth process and
 may include post-growth treatment.
 Type IIa

LG551278751

PROPORTIONS

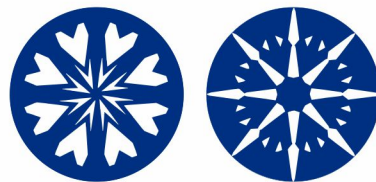


CLARITY CHARACTERISTICS



KEY TO SYMBOLS

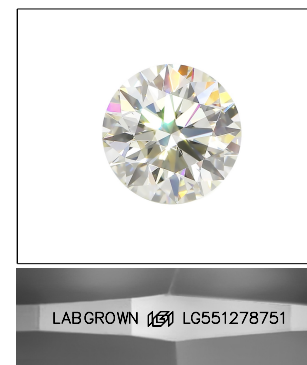
Red symbols indicate internal characteristics.
 Green symbols indicate external characteristics.



www.igi.org

GRADING SCALES

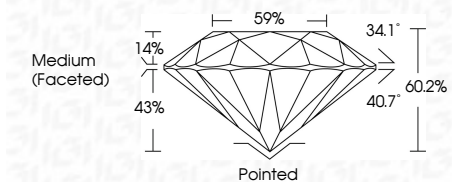
COLOR GRADING SCALE	CL	NC	FT	VLT	LT	
	COLORLESS D-F	NEAR COLORLESS G-J	FAINT K-M	VERY LIGHT N-R	LIGHT S-Z	
CLARITY (10x) GRADING SCALE	FL	IF	VVS	VS	SI	I
	FLAWLESS INTERNALLY FLAWLESS	VERY VERY SLIGHTLY INCLUDED	VERY SLIGHTLY INCLUDED	SLIGHTLY INCLUDED		INCLUDED



LASERSCRIBESM

Sample Image Used

October 14, 2022
 IGI Report Number **LG551278751**
 Description **LABORATORY GROWN
DIAMOND**
 Shape and Cutting Style **ROUND BRILLIANT**
 Measurements **10.09 - 10.11 X 6.08 MM**
GRADING RESULTS
 Carat Weight **3.80 CARATS**
 Color Grade **G**
 Clarity Grade **VS 1**
 Cut Grade **IDEAL**



ADDITIONAL GRADING INFORMATION

Polish **EXCELLENT**
 Symmetry **EXCELLENT**
 Fluorescence **NONE**
 Inscription(s) **LABGROWN (IGI) LG551278751**

Comments: HEARTS & ARROWS
 This Laboratory Grown Diamond was created by
 Chemical Vapor Deposition (CVD) growth process and
 may include post-growth treatment.
 Type IIa



October 14, 2022	IGI Report No LG551278751	Carat Weight	3.80 CARATS	Color Grade	G	Clarity Grade	VS 1	Cut Grade	IDEAL	Depth	60.2%	Table	59%	Grade	Medium (Faceted)	Culet	Pointed	Polish	EXCELLENT	Symmetry	EXCELLENT	Fluorescence	NONE	Inscription(s)	LABGROWN (IGI) LG551278751	Comments:	HEARTS & ARROWS This Laboratory Grown Diamond was created by Chemical Vapor Deposition (CVD) growth process and may include post-growth treatment. Type IIa
------------------	---------------------------	--------------	-------------	-------------	---	---------------	------	-----------	-------	-------	-------	-------	-----	-------	------------------	-------	---------	--------	-----------	----------	-----------	--------------	------	----------------	----------------------------	-----------	---

