



ELECTRONIC COPY

LABORATORY GROWN DIAMOND REPORT

October 14, 2022
IGI Report Number LG551286772
Description LABORATORY GROWN DIAMOND
Shape and Cutting Style ROUND BRILLIANT
Measurements 14.34 - 14.38 X 8.62 MM

GRADING RESULTS

Carat Weight 10.75 CARATS
Color Grade F
Clarity Grade SI 2
Cut Grade IDEAL

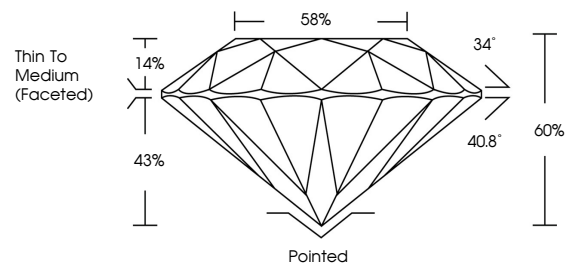
ADDITIONAL GRADING INFORMATION

Polish EXCELLENT
Symmetry EXCELLENT
Fluorescence NONE
Inscription(s) LABGROWN (IGI) LG551286772

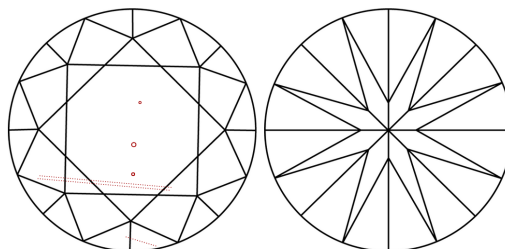
Comments: This Laboratory Grown Diamond was created by Chemical Vapor Deposition (CVD) growth process and may include post-growth treatment. Type IIa

LG551286772

PROPORTIONS



CLARITY CHARACTERISTICS



KEY TO SYMBOLS

Red symbols indicate internal characteristics.
Green symbols indicate external characteristics.

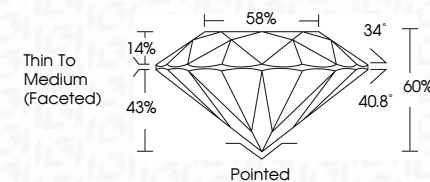
LABORATORY GROWN DIAMOND REPORT

GRADING SCALES

Table with 2 rows: COLOR GRADING SCALE (CL, NC, FT, VLT, LT) and CLARITY (10x) GRADING SCALE (FL, IF, VVS, VS, SI, I).

LABORATORY GROWN DIAMOND REPORT

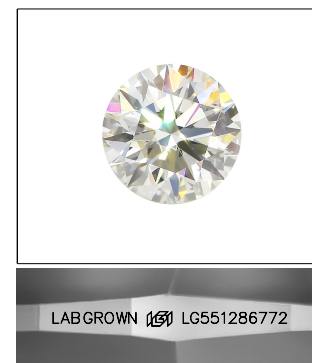
October 14, 2022
IGI Report Number LG551286772
Description LABORATORY GROWN DIAMOND
Shape and Cutting Style ROUND BRILLIANT
Measurements 14.34 - 14.38 X 8.62 MM
GRADING RESULTS
Carat Weight 10.75 CARATS
Color Grade F
Clarity Grade SI 2
Cut Grade IDEAL



ADDITIONAL GRADING INFORMATION

Polish EXCELLENT
Symmetry EXCELLENT
Fluorescence NONE
Inscription(s) LABGROWN (IGI) LG551286772

Comments: This Laboratory Grown Diamond was created by Chemical Vapor Deposition (CVD) growth process and may include post-growth treatment. Type IIa



LASERSCRIBE SM

Sample Image Used



IGI

October 14, 2022
IGI Report No LG551286772
ROUND BRILLIANT
14.34 - 14.38 X 8.62 MM
Carat Weight 10.75 CARATS
Color Grade F
Cut Grade IDEAL
Depth 60%
Table 58%
Girdle Thin To Medium (Faceted)
Culet Pointed
Polish EXCELLENT
Symmetry EXCELLENT
Fluorescence NONE
Inscription(s) LABGROWN (IGI) LG551286772

Comments: This Laboratory Grown Diamond was created by Chemical Vapor Deposition (CVD) growth process and may include post-growth treatment. Type IIa