



ELECTRONIC COPY

LABORATORY GROWN DIAMOND REPORT

October 16, 2022
IGI Report Number LG551290650
Description LABORATORY GROWN DIAMOND
Shape and Cutting Style OVAL BRILLIANT
Measurements 10.16 X 7.23 X 4.55 MM

GRADING RESULTS

Carat Weight 2.06 CARATS
Color Grade E
Clarity Grade VS 2

ADDITIONAL GRADING INFORMATION

Polish EXCELLENT
Symmetry EXCELLENT
Fluorescence NONE

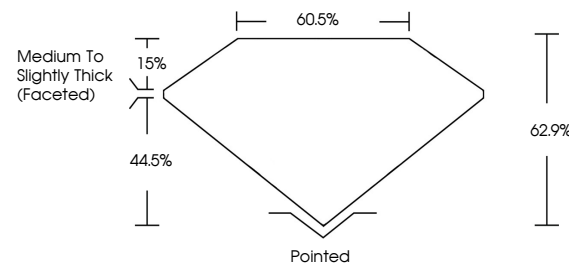
Inscription(s) LABGROWN (LGI) LG551290650

Comments: As Grown - No indication of post-growth treatment.

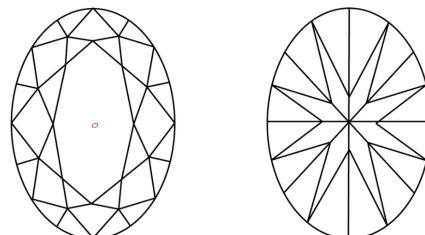
This Laboratory Grown Diamond was created by High Pressure High Temperature (HPHT) growth process. Type II

LG551290650

PROPORTIONS



CLARITY CHARACTERISTICS

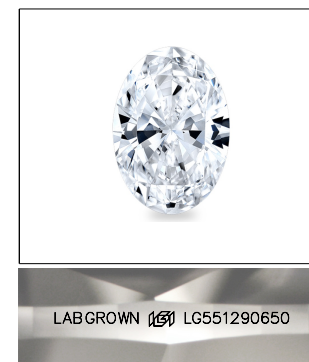


KEY TO SYMBOLS

Red symbols indicate internal characteristics.
Green symbols indicate external characteristics.

GRADING SCALES

Table with 5 columns for Color Grading Scale (CL, NC, FT, VLT, LT) and 5 columns for Clarity (10x) Grading Scale (FL, IF, VVS, VS, SI, I). Each cell contains a range of grades.

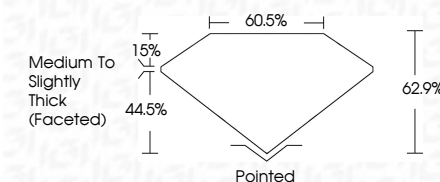


LABGROWN (LGI) LG551290650

LASERSCRIBE SM

Sample Image Used

October 16, 2022
IGI Report Number LG551290650
Description LABORATORY GROWN DIAMOND
Shape and Cutting Style OVAL BRILLIANT
Measurements 10.16 X 7.23 X 4.55 MM
GRADING RESULTS
Carat Weight 2.06 CARATS
Color Grade E
Clarity Grade VS 2



ADDITIONAL GRADING INFORMATION

Polish EXCELLENT
Symmetry EXCELLENT
Fluorescence NONE
Inscription(s) LABGROWN (LGI) LG551290650

Comments: As Grown - No indication of post-growth treatment. This Laboratory Grown Diamond was created by High Pressure High Temperature (HPHT) growth process. Type II



Summary table of report details: IGI Report No. LG551290650, OVAL BRILLIANT, 10.16 X 7.23 X 4.55 MM, 2.06 CARATS, Color Grade E, VS 2, 62.9% table, 60.5% depth, Medium to Slightly Thick (Faceted), Pointed, EXCELLENT Polish, EXCELLENT Symmetry, NONE Fluorescence, LABGROWN (LGI) LG551290650 Inscription(s).

As Grown - No indication of post-growth treatment. This Laboratory Grown Diamond was created by High Pressure High Temperature (HPHT) growth process. Type II