



ELECTRONIC COPY

LABORATORY GROWN DIAMOND REPORT

October 15, 2022

IGI Report Number **LG551292141**

Description **LABORATORY GROWN
DIAMOND**

Shape and Cutting Style **OVAL BRILLIANT**

Measurements 10.30 X 6.87 X 4.33 MM

GRADING RESULTS

Carat Weight 1.91 CARAT

Color Grade E

Clarity Grade	SI 1
---------------	------

ADDITIONAL GRADING INFORMATION

Polish EXCELLENT

Symmetry **EXCELLENT**

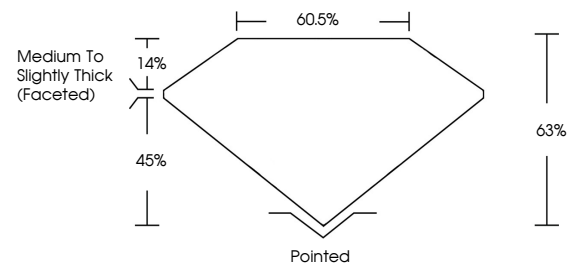
Fluorescence **NONE**

Inscription(s) LABGROWN LG551292141

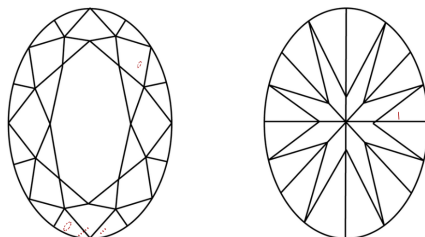
Comments: This Laboratory Grown Diamond was created by Chemical Vapor Deposition (CVD) growth process and may include post-growth treatment.
Type IIa

LG551292141

PROPORTIONS



CLARITY CHARACTERISTICS

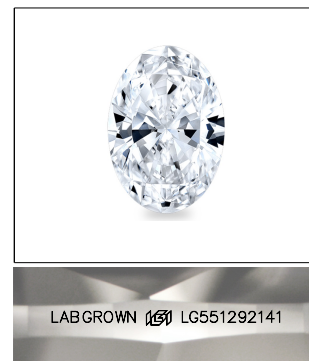


KEY TO SYMBOLS

Red symbols indicate internal characteristics.
Green symbols indicate external characteristics.

GRADING SCALES

COLOR GRADING SCALE	CL		NC		FT		VLT		LT	
	COLORLESS D-F		NEAR COLORLESS G-J		FAINT K-M		VERY LIGHT N-R		LIGHT S-Z	
CLARITY (10x) GRADING SCALE	FL IF		VVS		VS		SI		I	
	FLAWLESS INTERNALLY		VERY VERY SLIGHTLY INCLUDED		VERY SLIGHTLY INCLUDED		SLIGHTLY INCLUDED		INCLUDED	

LASERSCRIBESM

Sample Image Used



© IGI 2020, International Gemological Institute

FD - 10 20

LABORATORY GROWN DIAMOND REPORT

October 15, 2022	
IGI Report Number	LG551292141
Description	LABORATORY GROWN

Shape and Cutting Style **OVAL BRILLIANT**

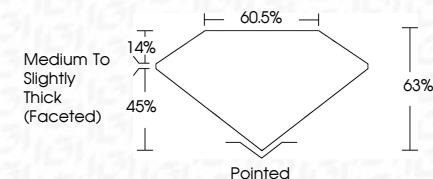
Measurements 10.30 X 6.87 X 4.33 MM

GRADING RESULTS

Carat Weight 1.91 CARAT

Color Grade E

Clarity Grade SI 1



ADDITIONAL GRADING INFORMATION

Polish **EXCELLENT**Symmetry **EXCELLENT**Fluorescence **NONE**

Inscription(s) LABGROWN (13) LG551292141

Comments: This Laboratory Grown Diamond was created by Chemical Vapor Deposition (CVD) growth process and may include post-growth treatment.
Type IIa



October 15, 2022	Color Grade	1,01 CARAT	<p>Medium to Slightly Thick (faceted)</p> <p>Polished</p> <p>EXCELLENT</p> <p>EXCELLENT</p> <p>NONE</p> <p>LASER-GROWN (g8) IGS61922141</p>
G/ Report No. IGS61922141	Clarity Grade	S11	
CVAL BRILLIANT	Depth	69%	
10.30 X 6.87 X 4.33 MM	Table	60.5%	
	Girdle		
Carat Weight	Culet		
	Polish		
	Symmetry		
	Fluorescence (inclusions?)		
Comments:			<p>This Laboratory Grown Diamond was Laser Grown and may contain post-growth treatment.</p> <p>Type IICa</p>