



ELECTRONIC COPY

LABORATORY GROWN DIAMOND REPORT

October 18, 2022
IGI Report Number LG551292365
Description LABORATORY GROWN DIAMOND
Shape and Cutting Style ROUND BRILLIANT
Measurements 10.24 - 10.27 X 6.22 MM

GRADING RESULTS

Carat Weight 4.01 CARATS
Color Grade E
Clarity Grade INTERNALLY FLAWLESS
Cut Grade IDEAL

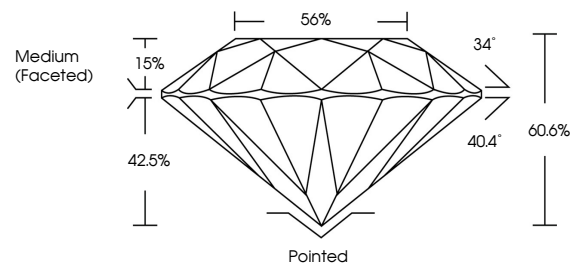
ADDITIONAL GRADING INFORMATION

Polish EXCELLENT
Symmetry EXCELLENT
Fluorescence NONE
Inscription(s) LABGROWN (IGI) LG551292365

Comments: As Grown - No indication of post-growth treatment. This Laboratory Grown Diamond was created by High Pressure High Temperature (HPHT) growth process. Type II

LG551292365

PROPORTIONS



CLARITY CHARACTERISTICS

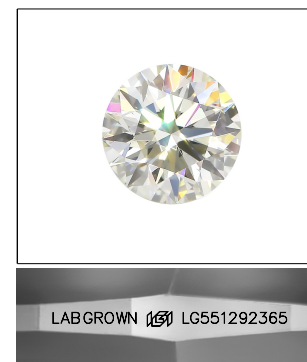


KEY TO SYMBOLS

Red symbols indicate internal characteristics. Green symbols indicate external characteristics.

GRADING SCALES

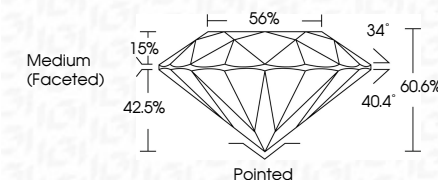
Table with 2 rows and 5 columns showing color and clarity grading scales. Color scale: CL (Colorless D-F), NC (Near colorless G-J), FT (Faint K-M), VLT (Very light N-R), LT (Light S-Z). Clarity scale: FL (Flawless internally flawless), IF (Internally flawless), VVS (Very very slightly included), VS (Very slightly included), SI (Slightly included), I (Included).



LASERSCRIBE SM

Sample Image Used

October 18, 2022
IGI Report Number LG551292365
Description LABORATORY GROWN DIAMOND
Shape and Cutting Style ROUND BRILLIANT
Measurements 10.24 - 10.27 X 6.22 MM
GRADING RESULTS
Carat Weight 4.01 CARATS
Color Grade E
Clarity Grade INTERNALLY FLAWLESS
Cut Grade IDEAL



ADDITIONAL GRADING INFORMATION

Polish EXCELLENT
Symmetry EXCELLENT
Fluorescence NONE
Inscription(s) LABGROWN (IGI) LG551292365

Comments: As Grown - No indication of post-growth treatment. This Laboratory Grown Diamond was created by High Pressure High Temperature (HPHT) growth process. Type II



IGI



Summary table of report details: Date (October 18, 2022), Report No (IGI 551292365), Shape (Round Brilliant), Carat Weight (4.01 Carats), Color Grade (E), Clarity Grade (IF), Depth (60.6%), Table (56%), Cut Grade (Medium (Faceted)), Culet (Pointed), Polish (Excellent), Symmetry (Excellent), Fluorescence (None), Inscription(s) (LABGROWN (IGI) LG551292365), and Comments (As Grown - No indication of post-growth treatment...).