



**ELECTRONIC COPY**

## LABORATORY GROWN DIAMOND REPORT

October 20, 2022

IGI Report Number **LG553218924**

Description	LABORATORY GROWN DIAMOND
-------------	-----------------------------

Shape and Cutting Style **OVAL BRILLIANT**

Measurements 9.65 X 6.76 X 4.06 MM

## GRADING RESULTS

**Carat Weight** 1.64 CARAT

Color Grade D

Clarity Grade VS 1

### ADDITIONAL GRADING INFORMATION

Polish EXCELLENT

Symmetry **EXCELLENT**

Fluorescence **NONE**

Inscription(s) LABGROWN  LG553218924

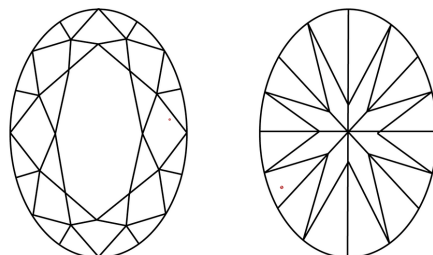
Comments: As Grown - No indication of post-growth treatment.

This Laboratory Grown Diamond was created by High Pressure High Temperature (HPHT) growth process.  
Type II

Diagram illustrating the proportions of a diamond-shaped object (likely a gemstone or tool head) with the following dimensions and labels:

- Top Width:** 61.5%
- Left Side Proportions:**
  - Top section: 12.5%
  - Bottom section: 44%
  - Label: Medium To Slightly Thick (Faceted)
- Right Side Proportion:** 60.1%
- Bottom Point:** Pointed

## CLARITY CHARACTERISTICS

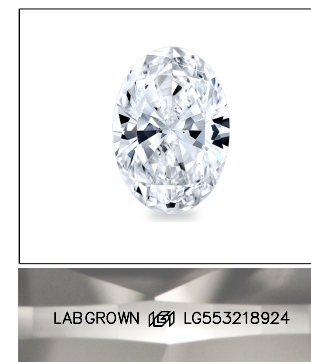


### KEY TO SYMBOLS

Red symbols indicate internal characteristics.  
Green symbols indicate external characteristics.

## GRADING SCALES

COLOR GRADING SCALE	CL		NC	FT	VL	LT
	COLORLESS D-F		NEAR COLORLESS G-J	FAINT K-M	VERY LIGHT N-R	LIGHT S-Z
CLARITY (10x) GRADING SCALE	FL	IF	VVS	VS	SI	I
	FLAWLESS INTERNALLY FLAWLESS		VERY VERY SLIGHTLY INCLUDED	VERY SLIGHTLY INCLUDED	SLIGHTLY INCLUDED	INCLUDED

LASERSCRIBE<sup>SM</sup>

Sample Image Used



© IGI 2020, International Gemological Institute

FD - 10 20

LABORATORY GROWN DIAMOND REPORT

October 20, 2022	
IGI Report Number	LG553218924
Description	LABORATORY GROWN

Shape and Cutting Style **OVAL BRILLIANT**

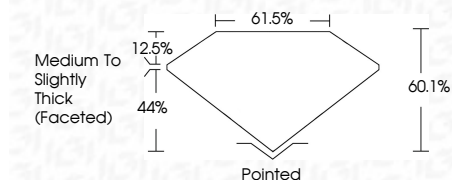
Measurements 9.65 X 6.76 X 4.06 MM

## GRADING RESULTS

Carat Weight 1.64 CARAT

Color Grade D

Clarity Grade VS 1



### ADDITIONAL GRADING INFORMATION

Polish **EXCELLENT**Symmetry **EXCELLENT**Fluorescence **NONE**

Inscription(s) LABGROWN 15 LG553218924

Comments: As Grown - No indication of post-growth treatment.

This Laboratory Grown Diamond was created by High Pressure High Temperature (HPHT) growth process.  
Type II



October 20, 2022	GJ Report No. LG553218924	
EVALUATION		
6.65 X 6.5 X 4.75 X 4.06 MM	1.64 CARAT	
Color Weight	D	
Color Grade	Clarity Grade	VS1
	Depth	60.1%
	Table	61.5%
Grade	Medium to Slightly Thick Faceted	
Culet	Pointed	
Polish	EXCELLENT	
Symmetry	EXCELLENT	
Fluorescence	NONE	
Inscriptions(s)	LABGROWN LG553218924	
<b>Comments:</b> As Grown - No Indication of post-growth treatment. Laboratory Grown Diamond was created by High Pressure High Temperature (HPHT) growth process.		