



ELECTRONIC COPY

LABORATORY GROWN DIAMOND REPORT

November 8, 2022
 IGI Report Number **LG553219075**
 Description **LABORATORY GROWN
DIAMOND**
 Shape and Cutting Style **ROUND BRILLIANT**
 Measurements **10.95 - 10.98 X 6.73 MM**

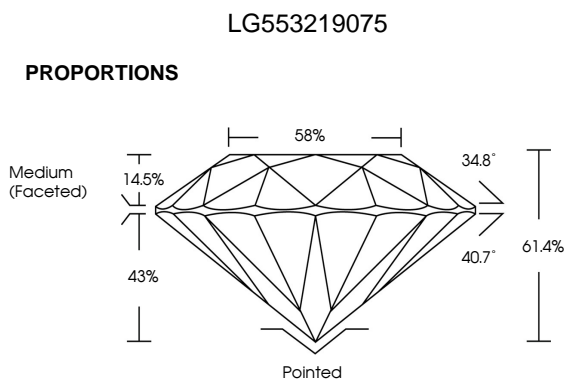
GRADING RESULTS

Carat Weight **5.00 CARATS**
 Color Grade **G**
 Clarity Grade **VS 1**
 Cut Grade **IDEAL**

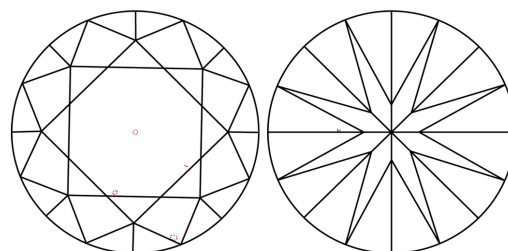
ADDITIONAL GRADING INFORMATION

Polish **EXCELLENT**
 Symmetry **EXCELLENT**
 Fluorescence **NONE**
 Inscription(s) **LABGROWN (IGI) LG553219075**

Comments: HEARTS & ARROWS
 This Laboratory Grown Diamond was created by
 Chemical Vapor Deposition (CVD) growth process and
 may include post-growth treatment.
 Type IIa

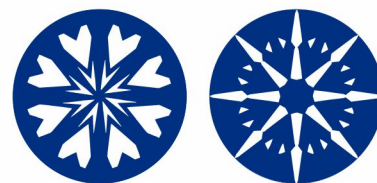


CLARITY CHARACTERISTICS



KEY TO SYMBOLS

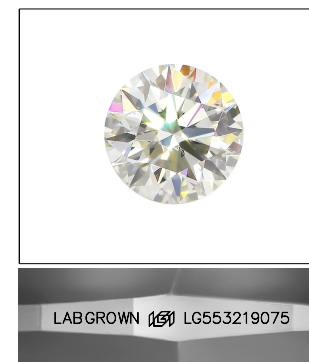
Red symbols indicate internal characteristics.
 Green symbols indicate external characteristics.



www.igi.org

GRADING SCALES

COLOR GRADING SCALE	CL	NC	FT	VLT	LT	
	COLORLESS D-F	NEAR COLORLESS G-J	FAINT K-M	VERY LIGHT N-R	LIGHT S-Z	
CLARITY (10x) GRADING SCALE	FL	IF	VVS	VS	SI	I
	FLAWLESS INTERNALLY FLAWLESS	VERY VERY SLIGHTLY INCLUDED	VERY SLIGHTLY INCLUDED	SLIGHTLY INCLUDED		INCLUDED

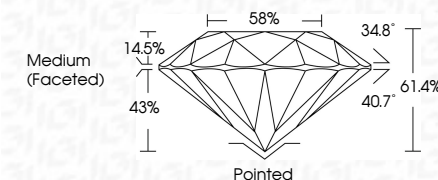


LABGROWN (IGI) LG553219075

LASERSCRIBESM

Sample Image Used

November 8, 2022
 IGI Report Number **LG553219075**
 Description **LABORATORY GROWN
DIAMOND**
 Shape and Cutting Style **ROUND BRILLIANT**
 Measurements **10.95 - 10.98 X 6.73 MM**
GRADING RESULTS
 Carat Weight **5.00 CARATS**
 Color Grade **G**
 Clarity Grade **VS 1**
 Cut Grade **IDEAL**



ADDITIONAL GRADING INFORMATION

Polish **EXCELLENT**
 Symmetry **EXCELLENT**
 Fluorescence **NONE**
 Inscription(s) **LABGROWN (IGI) LG553219075**

Comments: HEARTS & ARROWS
 This Laboratory Grown Diamond was created by
 Chemical Vapor Deposition (CVD) growth process and
 may include post-growth treatment.
 Type IIa



IGI

November 8, 2022	IGI Report No. LG553219075	5.00 CARATS	G	VS 1	IDEAL	61.4%	58%	Medium (Faceted)	Pointed	EXCELLENT	EXCELLENT	NONE	LABGROWN (IGI) LG553219075
ROUND BRILLIANT	10.95 - 10.98 X 6.73 MM	Carat Weight	Color Grade	Clarity Grade	Cut Grade	Depth	Table	Grade	Culet	Polish	Symmetry	Fluorescence	Inscription(s)

Comments: HEARTS & ARROWS
 This Laboratory Grown Diamond was created by Chemical Vapor Deposition (CVD) growth process and may include post-growth treatment.
 Type IIa

