



ELECTRONIC COPY

LABORATORY GROWN DIAMOND REPORT

November 9, 2022
IGI Report Number LG553219084
Description LABORATORY GROWN DIAMOND
Shape and Cutting Style ROUND BRILLIANT
Measurements 10.84 - 10.90 X 6.78 MM

GRADING RESULTS

Carat Weight 5.01 CARATS
Color Grade E
Clarity Grade VS 1
Cut Grade IDEAL

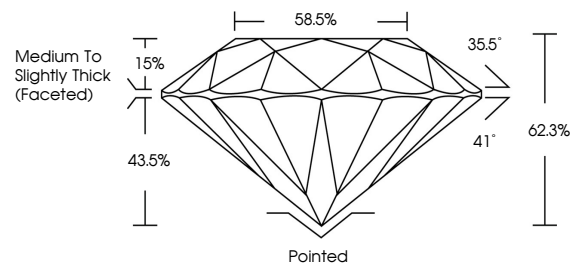
ADDITIONAL GRADING INFORMATION

Polish EXCELLENT
Symmetry EXCELLENT
Fluorescence NONE
Inscription(s) LABGROWN IGI LG553219084

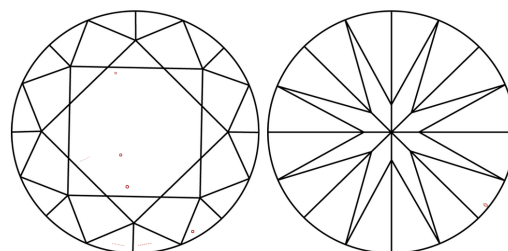
Comments: HEARTS & ARROWS
This Laboratory Grown Diamond was created by Chemical Vapor Deposition (CVD) growth process and may include post-growth treatment. Type IIa

LG553219084

PROPORTIONS



CLARITY CHARACTERISTICS



KEY TO SYMBOLS

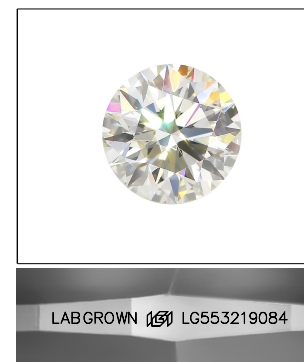
Red symbols indicate internal characteristics.
Green symbols indicate external characteristics.



www.igi.org

GRADING SCALES

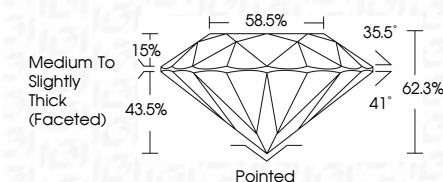
Table with 2 rows and 5 columns showing color and clarity grading scales. Color scale: CL (Colorless D-F), NC (Near colorless G-J), FT (Faint K-M), VLT (Very light N-R), LT (Light S-Z). Clarity scale: FL (Flawless internally flawless), IF (Internally flawless), VVS (Very very slightly included), VS (Very slightly included), SI (Slightly included), I (Included).



LASERSCRIBE SM

Sample Image Used

November 9, 2022
IGI Report Number LG553219084
Description LABORATORY GROWN DIAMOND
Shape and Cutting Style ROUND BRILLIANT
Measurements 10.84 - 10.90 X 6.78 MM
GRADING RESULTS
Carat Weight 5.01 CARATS
Color Grade E
Clarity Grade VS 1
Cut Grade IDEAL



ADDITIONAL GRADING INFORMATION

Polish EXCELLENT
Symmetry EXCELLENT
Fluorescence NONE
Inscription(s) LABGROWN IGI LG553219084

Comments: HEARTS & ARROWS
This Laboratory Grown Diamond was created by Chemical Vapor Deposition (CVD) growth process and may include post-growth treatment. Type IIa



November 9, 2022
IGI Report No. LG553219084
ROUND BRILLIANT
10.84 - 10.90 X 6.78 MM
Carat Weight 5.01 CARATS
Color Grade E
Clarity Grade VS 1
Cut Grade IDEAL
Depth 62.3%
Table 58.5%
Girdle Medium To Slightly Thick (Faceted)
Culet Pointed
Polish EXCELLENT
Symmetry EXCELLENT
Fluorescence NONE
Inscription(s) LABGROWN IGI LG553219084
Comments: HEARTS & ARROWS
This Laboratory Grown Diamond was created by Chemical Vapor Deposition (CVD) growth process and may include post-growth treatment. Type IIa

