



ELECTRONIC COPY

LABORATORY GROWN DIAMOND REPORT

November 3, 2022
IGI Report Number LG553220228
Description LABORATORY GROWN DIAMOND
Shape and Cutting Style ROUND BRILLIANT
Measurements 8.91 - 8.99 X 5.52 MM

GRADING RESULTS

Carat Weight 2.76 CARATS
Color Grade I
Clarity Grade VVS 2
Cut Grade IDEAL

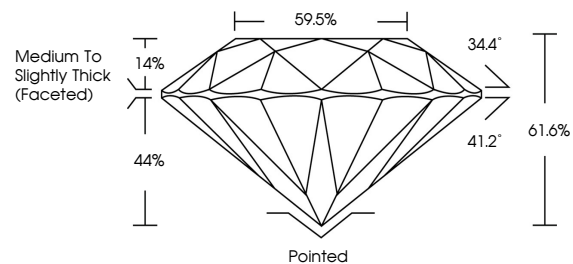
ADDITIONAL GRADING INFORMATION

Polish EXCELLENT
Symmetry EXCELLENT
Fluorescence NONE
Inscription(s) LABGROWN (IGI) LG553220228

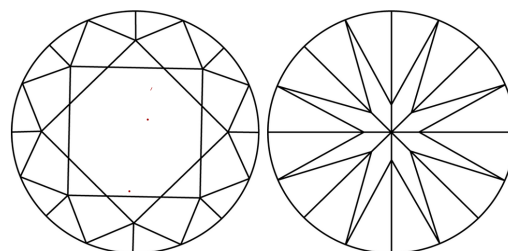
Comments: This Laboratory Grown Diamond was created by Chemical Vapor Deposition (CVD) growth process and may include post-growth treatment. Type IIa

LG553220228

PROPORTIONS



CLARITY CHARACTERISTICS



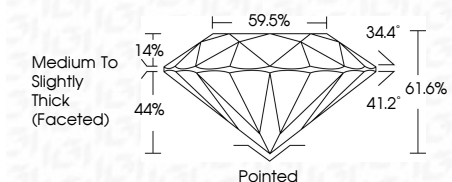
KEY TO SYMBOLS

Red symbols indicate internal characteristics.
Green symbols indicate external characteristics.

November 3, 2022
IGI Report Number LG553220228
Description LABORATORY GROWN DIAMOND
Shape and Cutting Style ROUND BRILLIANT
Measurements 8.91 - 8.99 X 5.52 MM
GRADING RESULTS
Carat Weight 2.76 CARATS
Color Grade I
Clarity Grade VVS 2
Cut Grade IDEAL

GRADING SCALES

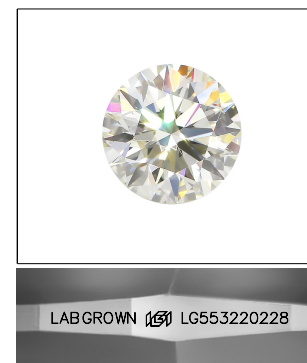
Table showing color grading scales (CL, NC, FT, VLT, LT) and clarity (10x) grading scales (FL, IF, VVS, VS, SI, I).



ADDITIONAL GRADING INFORMATION

Polish EXCELLENT
Symmetry EXCELLENT
Fluorescence NONE
Inscription(s) LABGROWN (IGI) LG553220228

Comments: This Laboratory Grown Diamond was created by Chemical Vapor Deposition (CVD) growth process and may include post-growth treatment. Type IIa



LASERSCRIBE SM
Sample Image Used



IGI

November 3, 2022
IGI Report No. LG553220228
ROUND BRILLIANT
8.91 - 8.99 X 5.52 MM
Carat Weight 2.76 CARATS
Color Grade I
Clarity Grade VVS 2
Cut Grade IDEAL
Depth 61.6%
Table 59.5%
Girdle Medium To Slightly Thick (Faceted)
Culet Pointed
Polish EXCELLENT
Symmetry EXCELLENT
Fluorescence NONE
Inscription(s) LABGROWN (IGI) LG553220228

Comments: This Laboratory Grown Diamond was created by Chemical Vapor Deposition (CVD) growth process and may include post-growth treatment. Type IIa