



ELECTRONIC COPY

LABORATORY GROWN DIAMOND REPORT

November 8, 2022
IGI Report Number LG553223358
Description LABORATORY GROWN DIAMOND
Shape and Cutting Style ROUND BRILLIANT
Measurements 11.23 - 11.31 X 7.01 MM

GRADING RESULTS

Carat Weight 5.51 CARATS
Color Grade E
Clarity Grade VVS 2
Cut Grade IDEAL

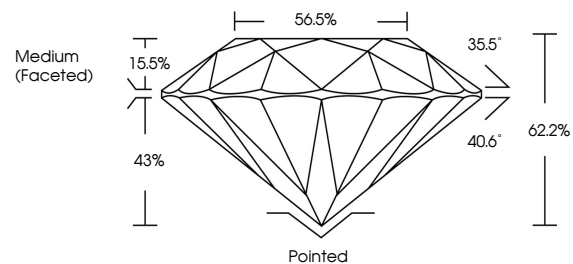
ADDITIONAL GRADING INFORMATION

Polish EXCELLENT
Symmetry EXCELLENT
Fluorescence NONE
Inscription(s) LABGROWN (IGI) LG553223358

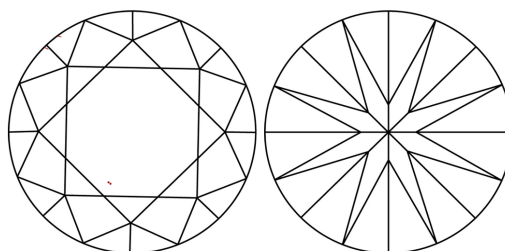
Comments: HEARTS & ARROWS
This Laboratory Grown Diamond was created by Chemical Vapor Deposition (CVD) growth process and may include post-growth treatment.
Type IIa

LG553223358

PROPORTIONS

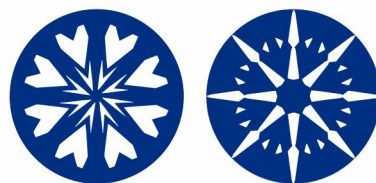


CLARITY CHARACTERISTICS



KEY TO SYMBOLS

Red symbols indicate internal characteristics.
Green symbols indicate external characteristics.

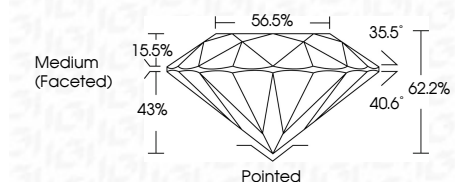


www.igi.org

November 8, 2022
IGI Report Number LG553223358
Description LABORATORY GROWN DIAMOND
Shape and Cutting Style ROUND BRILLIANT
Measurements 11.23 - 11.31 X 7.01 MM
GRADING RESULTS
Carat Weight 5.51 CARATS
Color Grade E
Clarity Grade VVS 2
Cut Grade IDEAL

GRADING SCALES

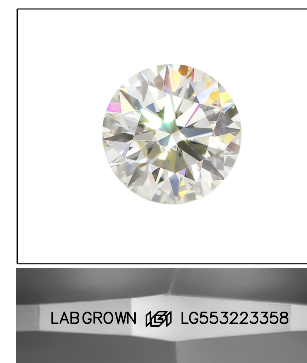
Table showing Color Grading Scale (CL to LT) and Clarity (10x) Grading Scale (FL to I).



ADDITIONAL GRADING INFORMATION

Polish EXCELLENT
Symmetry EXCELLENT
Fluorescence NONE
Inscription(s) LABGROWN (IGI) LG553223358

Comments: HEARTS & ARROWS
This Laboratory Grown Diamond was created by Chemical Vapor Deposition (CVD) growth process and may include post-growth treatment.
Type IIa



LASERSCRIBE (SM)

Sample Image Used



IGI

November 8, 2022
IGI Report No. LG553223358
ROUND BRILLIANT
Carat Weight 5.51 CARATS
Color Grade E
Clarity Grade VVS 2
Cut Grade IDEAL
Depth 62.2%
Table 56.5%
Girdle Medium (Faceted)
Culet Pointed
Polish EXCELLENT
Symmetry EXCELLENT
Fluorescence NONE
Inscription(s) LABGROWN (IGI) LG553223358
Comments: HEARTS & ARROWS
This Laboratory Grown Diamond was created by Chemical Vapor Deposition (CVD) growth process and may include post-growth treatment.
Type IIa