



ELECTRONIC COPY

LABORATORY GROWN DIAMOND REPORT

November 10, 2022
IGI Report Number LG553223368
Description LABORATORY GROWN DIAMOND
Shape and Cutting Style ROUND BRILLIANT
Measurements 11.03 - 11.08 X 6.85 MM

GRADING RESULTS

Carat Weight 5.17 CARATS
Color Grade G
Clarity Grade VS 1
Cut Grade IDEAL

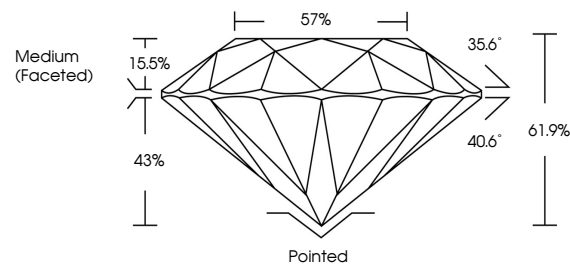
ADDITIONAL GRADING INFORMATION

Polish EXCELLENT
Symmetry EXCELLENT
Fluorescence NONE
Inscription(s) LABGROWN (IGI) LG553223368

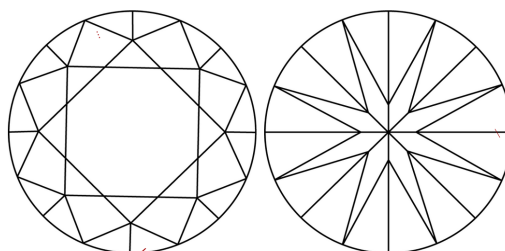
Comments: HEARTS & ARROWS
This Laboratory Grown Diamond was created by Chemical Vapor Deposition (CVD) growth process and may include post-growth treatment.
Type IIa

LG553223368

PROPORTIONS



CLARITY CHARACTERISTICS



KEY TO SYMBOLS

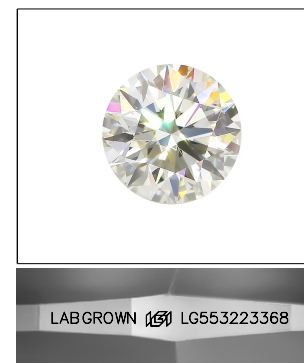
Red symbols indicate internal characteristics.
Green symbols indicate external characteristics.



www.igi.org

GRADING SCALES

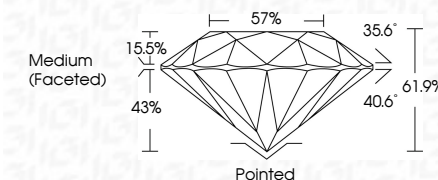
Table showing color grading scales (CL, NC, FT, VLT, LT) and clarity grading scales (FL, IF, VVS, VS, SI, I) with their corresponding descriptions.



LASERSCRIBE SM

Sample Image Used

November 10, 2022
IGI Report Number LG553223368
Description LABORATORY GROWN DIAMOND
Shape and Cutting Style ROUND BRILLIANT
Measurements 11.03 - 11.08 X 6.85 MM
GRADING RESULTS
Carat Weight 5.17 CARATS
Color Grade G
Clarity Grade VS 1
Cut Grade IDEAL



ADDITIONAL GRADING INFORMATION

Polish EXCELLENT
Symmetry EXCELLENT
Fluorescence NONE
Inscription(s) LABGROWN (IGI) LG553223368

Comments: HEARTS & ARROWS
This Laboratory Grown Diamond was created by Chemical Vapor Deposition (CVD) growth process and may include post-growth treatment.
Type IIa



Summary table of diamond characteristics: November 10, 2022, IGI Report No. LG553223368, ROUND BRILLIANT, 11.03 - 11.08 X 6.85 MM, 5.17 CARATS, Color Grade G, Clarity Grade VS 1, Cut Grade IDEAL, Depth 61.9%, Table 57%, Girdle Medium (Faceted), Culet Pointed, Polish EXCELLENT, Symmetry EXCELLENT, Fluorescence NONE, Inscription(s) LABGROWN (IGI) LG553223368.