



ELECTRONIC COPY

LABORATORY GROWN DIAMOND REPORT

November 10, 2022
IGI Report Number LG553223477
Description LABORATORY GROWN DIAMOND
Shape and Cutting Style PRINCESS CUT
Measurements 10.62 X 10.51 X 7.31 MM

GRADING RESULTS

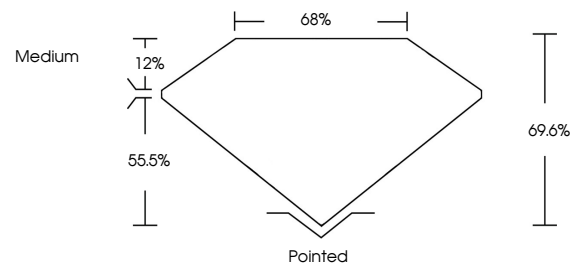
Carat Weight 7.04 CARATS
Color Grade G
Clarity Grade VS 1

ADDITIONAL GRADING INFORMATION

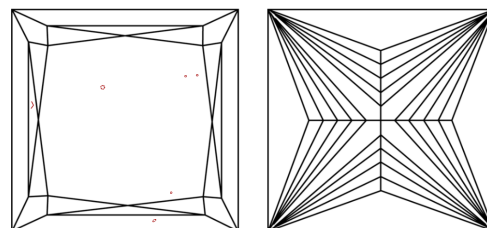
Polish EXCELLENT
Symmetry EXCELLENT
Fluorescence NONE
Inscription(s) LABGROWN IGI LG553223477
Comments: This Laboratory Grown Diamond was created by Chemical Vapor Deposition (CVD) growth process and may include post-growth treatment. Type IIa

LG553223477

PROPORTIONS



CLARITY CHARACTERISTICS

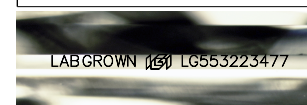


KEY TO SYMBOLS

Red symbols indicate internal characteristics.
Green symbols indicate external characteristics.

GRADING SCALES

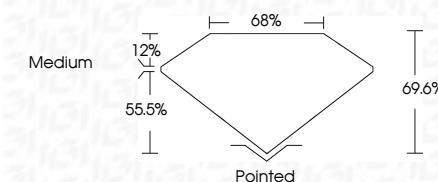
Table with 2 rows: COLOR GRADING SCALE (CL, NC, FT, VLT, LT) and CLARITY (10x) GRADING SCALE (FL, IF, VVS, VS, SI, I).



LASERSCRIBE SM

Sample Image Used

November 10, 2022
IGI Report Number LG553223477
Description LABORATORY GROWN DIAMOND
Shape and Cutting Style PRINCESS CUT
Measurements 10.62 X 10.51 X 7.31 MM
GRADING RESULTS
Carat Weight 7.04 CARATS
Color Grade G
Clarity Grade VS 1



ADDITIONAL GRADING INFORMATION

Polish EXCELLENT
Symmetry EXCELLENT
Fluorescence NONE
Inscription(s) LABGROWN IGI LG553223477
Comments: This Laboratory Grown Diamond was created by Chemical Vapor Deposition (CVD) growth process and may include post-growth treatment. Type IIa



IGI



November 10, 2022
IGI Report No. LG553223477
PRINCESS CUT
10.62 X 10.51 X 7.31 MM
Carat Weight 7.04 CARATS
Color Grade G
Clarity Grade VS 1
Depth 69.6%
Table 68%
Girdle Medium
Culet Pointed
Polish EXCELLENT
Symmetry EXCELLENT
Fluorescence NONE
Inscription(s) LABGROWN IGI LG553223477
Comments: This Laboratory Grown Diamond was created by Chemical Vapor Deposition (CVD) growth process and may include post-growth treatment. Type IIa