



**INTERNATIONAL  
GEMOLOGICAL  
INSTITUTE**

**ELECTRONIC COPY**

**LABORATORY GROWN  
DIAMOND REPORT**

**LG553228606**

**IGI LABORATORY GROWN  
DIAMOND ID REPORT**

November 15, 2022  
IGI Report Number **LG553228606**  
**ROUND BRILLIANT**  
**5.52 - 5.56 X 3.41 MM**  
Carat Weight 0.63 CARAT  
Color Grade FANCY INTENSE PINK  
Clarity Grade VS 1  
Cuf Grade IDEAL  
Polish VERY GOOD  
Symmetry EXCELLENT  
Fluorescence SLIGHT  
Inscription(s) LABGROWN (IGI) LG553228606

Comments: This Laboratory Grown Diamond was created by Chemical Vapor Deposition (CVD) growth process. Indications of post-growth treatment.

**LABORATORY GROWN DIAMOND REPORT**

**IGI LABORATORY GROWN DIAMOND IDENTIFICATION REPORT**

November 15, 2022  
IGI Report Number LG553228606  
Description LABORATORY GROWN DIAMOND  
Shape and Cutting Style ROUND BRILLIANT  
Measurements 5.52 - 5.56 X 3.41 MM

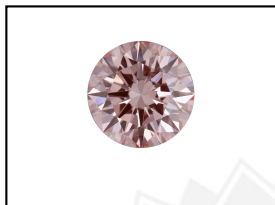
**GRADING RESULTS**

Carat Weight 0.63 CARAT  
Color Grade FANCY INTENSE PINK  
Clarity Grade VS 1  
Cut Grade IDEAL

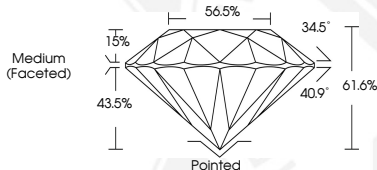
**ADDITIONAL GRADING INFORMATION**

Polish VERY GOOD  
Symmetry EXCELLENT  
Fluorescence SLIGHT  
Inscription(s) LABGROWN (IGI) LG553228606

Comments: This Laboratory Grown Diamond was created by Chemical Vapor Deposition (CVD) growth process. Indications of post-growth treatment.



**LASERSCRIBE<sup>SM</sup>**  
Sample Images Used



**IGI LABORATORY GROWN  
DIAMOND ID REPORT**

November 15, 2022  
IGI Report Number **LG553228606**  
**ROUND BRILLIANT**  
**5.52 - 5.56 X 3.41 MM**  
Carat Weight 0.63 CARAT  
Color Grade FANCY INTENSE PINK  
Clarity Grade VS 1  
Cuf Grade IDEAL  
Polish VERY GOOD  
Symmetry EXCELLENT  
Fluorescence SLIGHT  
Inscription(s) LABGROWN (IGI) LG553228606

Comments: This Laboratory Grown Diamond was created by Chemical Vapor Deposition (CVD) growth process. Indications of post-growth treatment.

THIS DOCUMENT WAS PRODUCED WITH THE FOLLOWING SECURITY MEASURES: SPECIAL DOCUMENT PAPER, INK SCREENS, WATERMARK, BACKGROUND DESIGN, HOLOGRAM AND OTHER SECURITY FEATURES NOT LISTED AND DO EXCEED DOCUMENT SECURITY INDUSTRY GUIDELINES.

For terms & conditions and to verify this report, please visit [www.igi.org](http://www.igi.org)