



**INTERNATIONAL
GEMOLOGICAL
INSTITUTE**

ELECTRONIC COPY

**LABORATORY GROWN
DIAMOND REPORT**

LG553230025

**IGI LABORATORY GROWN
DIAMOND ID REPORT**

November 17, 2022
IGI Report Number **LG553230025**
**CUT CORNERED RECTANGULAR
MODIFIED BRILLIANT**
4.47 X 3.57 X 2.34 MM
Carat Weight 0.33 CARAT
Color Grade FANCY VIVID GREENISH BLUE
Clarity Grade SI 1
Polish GOOD
Symmetry GOOD
Fluorescence NONE
Inscription(s) LABGROWN LG553230025

Comments: This Laboratory Grown Diamond was created by Chemical Vapor Deposition (CVD) growth process. Indications of post-growth treatment.

LABORATORY GROWN DIAMOND REPORT

IGI LABORATORY GROWN DIAMOND IDENTIFICATION REPORT

November 17, 2022
IGI Report Number LG553230025
Description LABORATORY GROWN DIAMOND
Shape and Cutting Style CUT CORNERED RECTANGULAR MODIFIED BRILLIANT
Measurements 4.47 X 3.57 X 2.34 MM

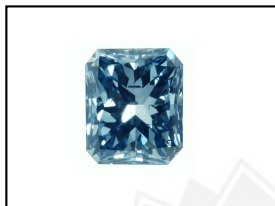
GRADING RESULTS

Carat Weight 0.33 CARAT
Color Grade FANCY VIVID GREENISH BLUE
Clarity Grade SI 1

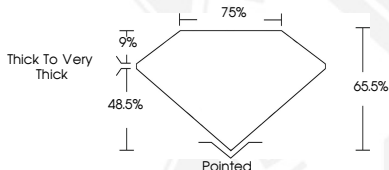
ADDITIONAL GRADING INFORMATION

Polish GOOD
Symmetry GOOD
Fluorescence NONE
Inscription(s) LABGROWN LG553230025

Comments: This Laboratory Grown Diamond was created by Chemical Vapor Deposition (CVD) growth process. Indications of post-growth treatment.



LASERSCRIBESM
Sample Images Used



THIS DOCUMENT WAS PRODUCED WITH THE FOLLOWING SECURITY MEASURES: SPECIAL DOCUMENT PAPER, INK SCREENS, WATERMARK, BACKGROUND DESIGN, HOLOGRAM AND OTHER SECURITY FEATURES NOT LISTED AND DO EXCEED DOCUMENT SECURITY INDUSTRY GUIDELINES.

For terms & conditions and to verify this report, please visit www.igi.org

**IGI LABORATORY GROWN
DIAMOND ID REPORT**

November 17, 2022
IGI Report Number **LG553230025**
**CUT CORNERED RECTANGULAR
MODIFIED BRILLIANT**
4.47 X 3.57 X 2.34 MM
Carat Weight 0.33 CARAT
Color Grade FANCY VIVID GREENISH BLUE
Clarity Grade SI 1
Polish GOOD
Symmetry GOOD
Fluorescence NONE
Inscription(s) LABGROWN LG553230025

Comments: This Laboratory Grown Diamond was created by Chemical Vapor Deposition (CVD) growth process. Indications of post-growth treatment.