



**INTERNATIONAL  
GEMOLOGICAL  
INSTITUTE**

**ELECTRONIC COPY**

**LABORATORY GROWN  
DIAMOND REPORT**

**LG553230036**

**IGI LABORATORY GROWN  
DIAMOND ID REPORT**

November 17, 2022

IGI Report Number **LG553230036**

**CUSHION BRILLIANT**

**4.15 X 3.65 X 2.33 MM**

Carat Weight 0.29 CARAT  
Color Grade FANCY VIVID GREENISH BLUE  
Clarity Grade VS 1  
Polish VERY GOOD  
Symmetry GOOD  
Fluorescence NONE  
Inscription(s) LABGROWN IGI LG553230036

Comments: This Laboratory Grown Diamond was created by Chemical Vapor Deposition (CVD) growth process. Indications of post-growth treatment.

**LABORATORY GROWN DIAMOND REPORT**

**IGI LABORATORY GROWN DIAMOND IDENTIFICATION REPORT**

November 17, 2022

IGI Report Number LG553230036

Description LABORATORY GROWN DIAMOND

Shape and Cutting Style CUSHION BRILLIANT

Measurements 4.15 X 3.65 X 2.33 MM

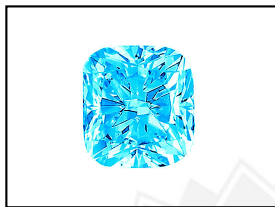
**GRADING RESULTS**

Carat Weight 0.29 CARAT  
Color Grade FANCY VIVID GREENISH BLUE  
Clarity Grade VS 1

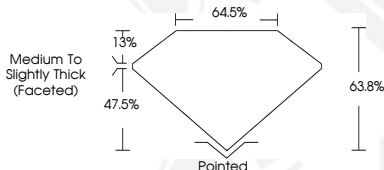
**ADDITIONAL GRADING INFORMATION**

Polish VERY GOOD  
Symmetry GOOD  
Fluorescence NONE  
Inscription(s) LABGROWN IGI LG553230036

Comments: This Laboratory Grown Diamond was created by Chemical Vapor Deposition (CVD) growth process. Indications of post-growth treatment.



**LASERSCRIBE<sup>SM</sup>**  
Sample Images Used



**IGI LABORATORY GROWN  
DIAMOND ID REPORT**

November 17, 2022

IGI Report Number **LG553230036**

**CUSHION BRILLIANT**

**4.15 X 3.65 X 2.33 MM**

Carat Weight 0.29 CARAT  
Color Grade FANCY VIVID GREENISH BLUE  
Clarity Grade VS 1  
Polish VERY GOOD  
Symmetry GOOD  
Fluorescence NONE  
Inscription(s) LABGROWN IGI LG553230036

Comments: This Laboratory Grown Diamond was created by Chemical Vapor Deposition (CVD) growth process. Indications of post-growth treatment.

THIS DOCUMENT WAS PRODUCED WITH THE FOLLOWING SECURITY MEASURES: SPECIAL DOCUMENT PAPER, INK SCREENS, WATERMARK, BACKGROUND DESIGN, HOLOGRAM AND OTHER SECURITY FEATURES NOT LISTED AND DO EXCEED DOCUMENT SECURITY INDUSTRY GUIDELINES.

For terms & conditions and to verify this report, please visit [www.igi.org](http://www.igi.org)