



LABORATORY GROWN DIAMOND REPORT

| | |
|-------------------------|-----------------------------|
| November 23, 2022 | |
| IGI Report Number | LG553250982 |
| Description | LABORATORY GROWN DIAMOND |
| Shape and Cutting Style | ROUND BRILLIANT |
| Measurements | 8.96 - 8.99 X 5.57 MM |

| | |
|---------------|-------------|
| Carat Weight | 2.76 CARATS |
| Color Grade | G |
| Clarity Grade | VVS 1 |
| Cut Grade | IDEAL |

| | |
|--------------|-----------|
| Polish | EXCELLENT |
| Symmetry | EXCELLENT |
| Fluorescence | NONE |

Inscription(s) **GROWN IN THE USA**
Pat.6,858,078 16 LG553250982

Comments: As Grown - No indication of post-growth treatment.
This Laboratory Grown Diamond was created by Chemical Vapor Deposition (CVD) process.

LG553250982

Report verification at igi.org

Medium To Slightly Thick (Faceted)

57.5%

15%

43.5%

35.6°

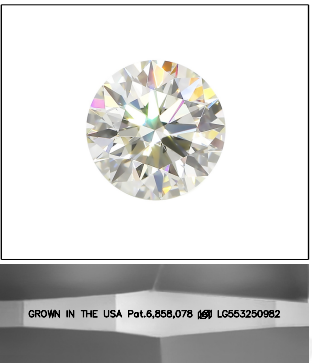
41.1°

62%

Pointed

Red symbols indicate internal characteristics.
Green symbols indicate external characteristics.

| IF | | | | VVS ¹⁻² | | | | VS ¹⁻² | | | | SI ¹⁻² | | | | I ¹⁻³ | | | |
|---------------------|--|---|--|-----------------------------|--|---|--|------------------------|--|---|--|-------------------|--|-------|--|------------------|--|-------|--|
| Internally Flawless | | | | Very Very Slightly Included | | | | Very Slightly Included | | | | Slightly Included | | | | Included | | | |
| COLOR | | | | | | | | | | | | | | | | | | | |
| D | | E | | F | | G | | H | | I | | J | | Faint | | Very Light | | Light | |



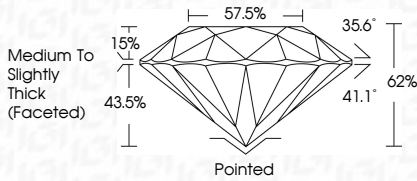
Sample Image Used



FD - 10 20

| | |
|-------------------------|-----------------------------|
| November 23, 2022 | |
| IGI Report Number | LG5532509828 |
| Description | LABORATORY GROWN DIAMOND |
| Shape and Cutting Style | ROUND BRILLIANT |
| Measurements | 8.96 - 8.99 X 5.57 MM |

| GRADING RESULTS | |
|-----------------|-------------|
| Carat Weight | 2.76 CARATS |
| Color Grade | G |
| Clarity Grade | VVS1 |
| Cut Grade | IDEAL |



| | |
|----------------|--|
| Polish | EXCELLENCE |
| Symmetry | EXCELLENCE |
| Fluorescence | NON |
| Inscription(s) | GROWN IN THE USA Pat.6,858,078 (US) LG55325098 |

Comments: As Grown - No indication of post-growth treatment.
This Laboratory Grown Diamond was created by Chemical Vapor Deposition (CVD) process.



THIS DOCUMENT WAS PRODUCED WITH THE FOLLOWING SECURITY MEASURES: SPECIAL DOCUMENT PAPER, INK SCREENS, WATERMARK BACKGROUND DESIGNS, HOLOGRAM AND OTHER SECURITY FEATURES NOT LISTED AND DO EXCEED DOCUMENT SECURITY INDUSTRY GUIDELINES.

Comments:
 as Grown - No Indication of post-growth
 treatment.
 This Laboratory Grown Diamond was
 created by Chemical Vapor Deposition
 (CVD) process.