



ELECTRONIC COPY

LABORATORY GROWN DIAMOND REPORT

November 7, 2022

IGI Report Number **LG553259991**

Description	LABORATORY GROWN DIAMOND
-------------	-----------------------------

Shape and Cutting Style **OVAL BRILLIANT**

Measurements 20.45 X 14.40 X 9.05 MM

GRADING RESULTS

Carat Weight **5.03 CARATS**

Color Grade F

Clarity Grade VS 2

ADDITIONAL GRADING INFORMATION

Polish EXCELLENT

Symmetry **EXCELLENT**

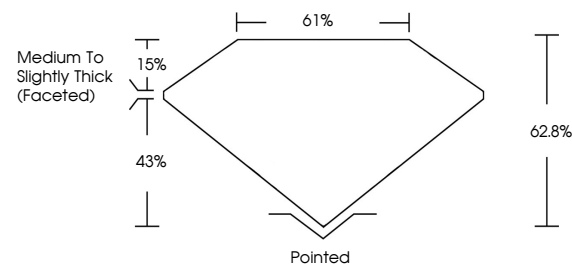
Fluorescence **NONE**

Inscription(s) LABGROWN LG553259991

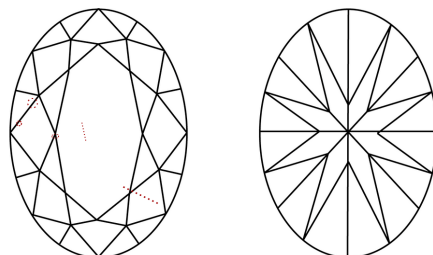
Comments: This Laboratory Grown Diamond was created by Chemical Vapor Deposition (CVD) growth process and may include post-growth treatment.
Type IIa

LG553259991

PROPORTIONS



CLARITY CHARACTERISTICS

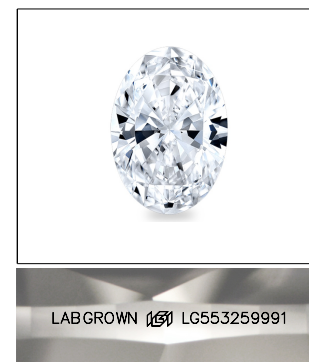


KEY TO SYMBOLS

Red symbols indicate internal characteristics.
Green symbols indicate external characteristics.

GRADING SCALES

COLOR GRADING SCALE	CL		NC		FT		VLT		LT	
	COLORLESS D-F		NEAR COLORLESS G-J		FAINT K-M		VERY LIGHT N-R		LIGHT S-Z	
CLARITY (10x) GRADING SCALE	FL IF		VVS		VS		SI		I	
	FLAWLESS INTERNALLY FLAWLESS		VERY VERY SLIGHTLY INCLUDED		VERY SLIGHTLY INCLUDED		SLIGHTLY INCLUDED		INCLUDED	

LASERSCRIBESM

Sample Image Used



© IGI 2020, International Gemological Institute

FD - 10 20

LABORATORY GROWN DIAMOND REPORT

November 7, 2022	
IGI Report Number	LG553259991
Description	LABORATORY GROWN

Shape and Cutting Style **OVAL BRILLIANT**

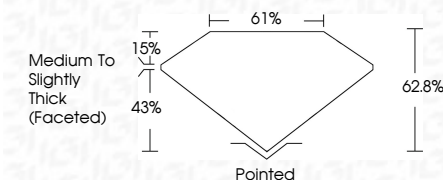
Measurements 20.45 X 14.40 X 9.05 MM

GRADING RESULTS

Carat Weight **5.03 CARATS**

Color Grade

Clarity Grade VS 2



ADDITIONAL GRADING INFORMATION

Polish **EXCELLENT**Symmetry **EXCELLENT**Fluorescence **NONE**

Inscription(s) LABGROWN 15 LG553259991

Comments: This Laboratory Grown Diamond was created by Chemical Vapor Deposition (CVD) growth process and may include post-growth treatment.
Type IIa



November 7, 2022	GI Report No. US65325991	5.03 CARBATS
ADAMS BRILLIANT	ADAMS X 14.40 X 9.05 MM	VS 2
Color Weight	Color Grade	62.8%
		61%
		Medium to Slightly Thick (Included)
		Polished
		EXCELLENT
		EXCELLENT
		NONE
		LABDOWN (a)
		US65325991
Comments:		
This Laboratory Grown Diamond was created using Chemical Vapor Deposition (CVD) growth process and may include post-growth treatment.		
Type Iia		