



ELECTRONIC COPY

LABORATORY GROWN DIAMOND REPORT

November 22, 2022
 IGI Report Number **LG553261935**
 Description **LABORATORY GROWN
DIAMOND**
 Shape and Cutting Style **HEART BRILLIANT**
 Measurements **7.77 X 8.46 X 4.81 MM**

GRADING RESULTS

Carat Weight **1.81 CARAT**
 Color Grade **D**
 Clarity Grade **VS 1**

ADDITIONAL GRADING INFORMATION

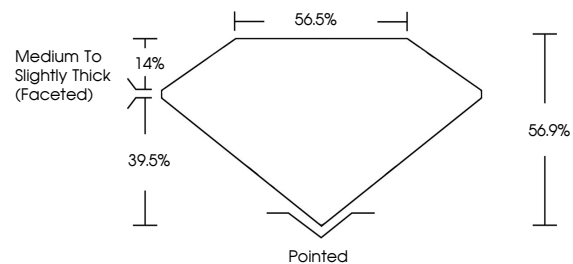
Polish **EXCELLENT**
 Symmetry **EXCELLENT**
 Fluorescence **NONE**

Inscription(s) **LABGROWN (LGI) LG553261935**
 Comments: This Laboratory Grown Diamond was created by Chemical Vapor Deposition (CVD) growth process and may include post-growth treatment. Type IIa

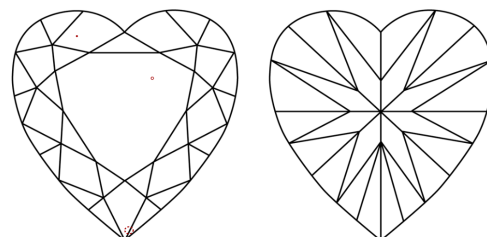
LABORATORY GROWN DIAMOND REPORT

LG553261935
 Report verification at igi.org

PROPORTIONS



CLARITY CHARACTERISTICS



KEY TO SYMBOLS

Red symbols indicate internal characteristics.
 Green symbols indicate external characteristics.

**LABORATORY GROWN
DIAMOND REPORT**

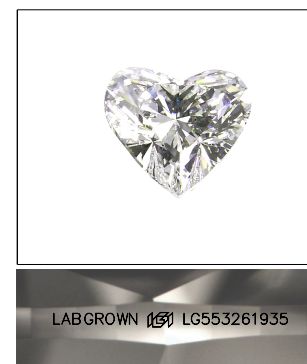
GRADING SCALES

CLARITY

IF	VVS ¹⁻²	VS ¹⁻²	SI ¹⁻²	I ¹⁻³
Internally Flawless	Very Very Slightly Included	Very Slightly Included	Slightly Included	Included

COLOR

D	E	F	G	H	I	J	Faint	Very Light	Light
---	---	---	---	---	---	---	-------	------------	-------

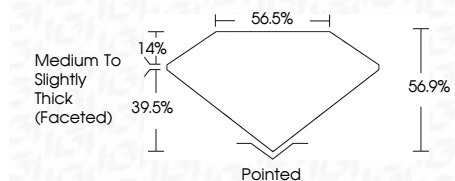


LASERSCRIBESM

Sample Image Used

LABORATORY GROWN DIAMOND REPORT

November 22, 2022
 IGI Report Number **LG553261935**
 Description **LABORATORY GROWN
DIAMOND**
 Shape and Cutting Style **HEART BRILLIANT**
 Measurements **7.77 X 8.46 X 4.81 MM**
GRADING RESULTS
 Carat Weight **1.81 CARAT**
 Color Grade **D**
 Clarity Grade **VS 1**



ADDITIONAL GRADING INFORMATION

Polish **EXCELLENT**
 Symmetry **EXCELLENT**
 Fluorescence **NONE**
 Inscription(s) **LABGROWN (LGI) LG553261935**

Comments: This Laboratory Grown Diamond was created by Chemical Vapor Deposition (CVD) growth process and may include post-growth treatment. Type IIa



IGI

November 22, 2022
 IGI Report No **LG553261935**
HEART BRILLIANT
 7.77 X 8.46 X 4.81 MM
 Carat Weight **1.81 CARAT**
 Color Grade **D**
 Clarity Grade **VS 1**
 Depth **56.9%**
 Table **56.5%**
 Girdle **Medium to Slightly Thick (Faceted)**
 Culet **Pointed**
 Polish **EXCELLENT**
 Symmetry **EXCELLENT**
 Fluorescence **NONE**
 Inscription(s) **LABGROWN (LGI) LG553261935**

Comments: This Laboratory Grown Diamond was created by Chemical Vapor Deposition (CVD) growth process and may include post-growth treatment. Type IIa

