



**INTERNATIONAL  
GEMOLOGICAL  
INSTITUTE**

**ELECTRONIC COPY**

**LABORATORY GROWN  
DIAMOND REPORT**

**LG555207893**

**IGI LABORATORY GROWN  
DIAMOND ID REPORT**

May 2, 2023

IGI Report Number **LG555207893**

**PRINCESS CUT**

**4.91 X 4.89 X 3.45 MM**

Carat Weight	0.74 CARAT
Color Grade	G
Clarity Grade	VS 1
Polish	EXCELLENT
Symmetry	EXCELLENT
Fluorescence	NONE
Inscription(s)	LG555207893

**LABORATORY GROWN DIAMOND REPORT**

**IGI LABORATORY GROWN DIAMOND IDENTIFICATION REPORT**

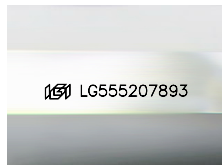
May 2, 2023

IGI Report Number **LG555207893**

Description **LABORATORY GROWN DIAMOND**

Shape and Cutting Style **PRINCESS CUT**

Measurements **4.91 X 4.89 X 3.45 MM**



Sample Image Used

**GRADING RESULTS**

Carat Weight **0.74 CARAT**

Color Grade **G**

Clarity Grade **VS 1**

**ADDITIONAL GRADING INFORMATION**

Polish **EXCELLENT**

Symmetry **EXCELLENT**

Fluorescence **NONE**

Inscription(s) **LG555207893**



**IGI LABORATORY GROWN  
DIAMOND ID REPORT**

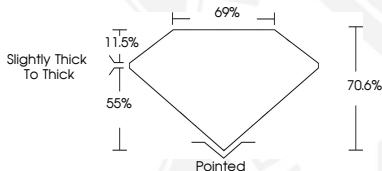
May 2, 2023

IGI Report Number **LG555207893**

**PRINCESS CUT**

**4.91 X 4.89 X 3.45 MM**

Carat Weight	0.74 CARAT
Color Grade	G
Clarity Grade	VS 1
Polish	EXCELLENT
Symmetry	EXCELLENT
Fluorescence	NONE
Inscription(s)	LG555207893



THIS DOCUMENT WAS PRODUCED WITH THE FOLLOWING SECURITY MEASURES: SPECIAL DOCUMENT PAPER, INK SCREENS, WATERMARK, BACKGROUND DESIGN, HOLOGRAM AND OTHER SECURITY FEATURES NOT LISTED AND DO EXCEED DOCUMENT SECURITY INDUSTRY GUIDELINES.

For terms & conditions and to verify this report, please visit [www.igi.org](http://www.igi.org)