



ELECTRONIC COPY

LABORATORY GROWN DIAMOND REPORT

November 11, 2022
IGI Report Number LG555268136
Description LABORATORY GROWN DIAMOND
Shape and Cutting Style CUT CORNERED RECTANGULAR MODIFIED BRILLIANT
Measurements 9.86 X 6.87 X 4.63 MM

GRADING RESULTS

Carat Weight 2.69 CARATS
Color Grade F
Clarity Grade VVS 2

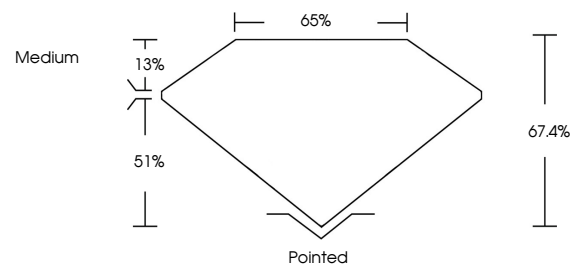
ADDITIONAL GRADING INFORMATION

Polish EXCELLENT
Symmetry EXCELLENT
Fluorescence NONE
Inscription(s) LABGROWN IGI LG555268136

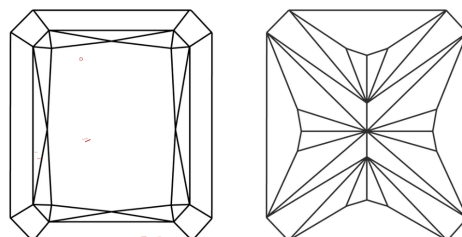
Comments: This Laboratory Grown Diamond was created by Chemical Vapor Deposition (CVD) growth process and may include post-growth treatment. Type IIa

LG555268136

PROPORTIONS



CLARITY CHARACTERISTICS

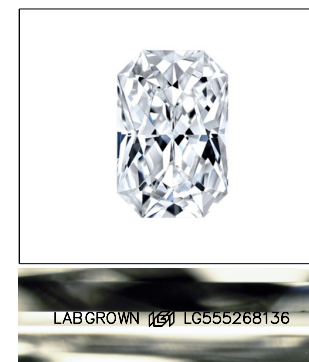


KEY TO SYMBOLS

Red symbols indicate internal characteristics.
Green symbols indicate external characteristics.

GRADING SCALES

Table with 2 columns: COLOR GRADING SCALE and CLARITY (10x) GRADING SCALE. Rows include color grades (CL, NC, FT, VLT, LT) and clarity grades (FL, IF, VVS, VS, SI, I).

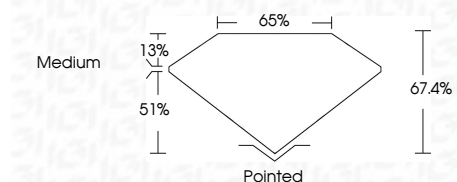


LASERSCRIBE SM
Sample Image Used

November 11, 2022
IGI Report Number LG555268136
Description LABORATORY GROWN DIAMOND
Shape and Cutting Style CUT CORNERED RECTANGULAR MODIFIED BRILLIANT
Measurements 9.86 X 6.87 X 4.63 MM

GRADING RESULTS

Carat Weight 2.69 CARATS
Color Grade F
Clarity Grade VVS 2



ADDITIONAL GRADING INFORMATION

Polish EXCELLENT
Symmetry EXCELLENT
Fluorescence NONE
Inscription(s) LABGROWN IGI LG555268136

Comments: This Laboratory Grown Diamond was created by Chemical Vapor Deposition (CVD) growth process and may include post-growth treatment. Type IIa



Summary table of report details: November 11, 2022, IGI Report No. LG555268136, CUT CORNERED RECT. MODIFIED, 9.86 X 6.87 X 4.63 MM, 2.69 CARATS, F, VVS 2, 67.4%, 65%, Medium, Pointed, EXCELLENT, EXCELLENT, NONE, LABGROWN IGI LG555268136.