



**ELECTRONIC COPY**

**LABORATORY GROWN DIAMOND REPORT**

November 14, 2022  
 IGI Report Number **LG555272235**  
 Description **LABORATORY GROWN  
DIAMOND**  
 Shape and Cutting Style **CUSHION BRILLIANT**  
 Measurements **7.95 X 6.60 X 4.36 MM**

**GRADING RESULTS**

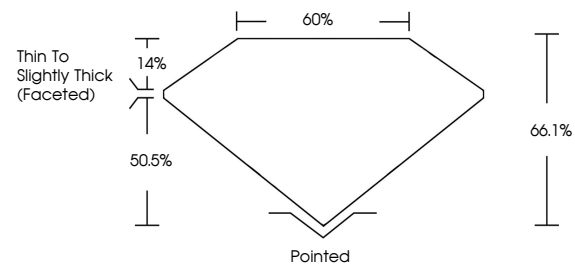
Carat Weight **1.72 CARAT**  
 Color Grade **F**  
 Clarity Grade **SI 1**

**ADDITIONAL GRADING INFORMATION**

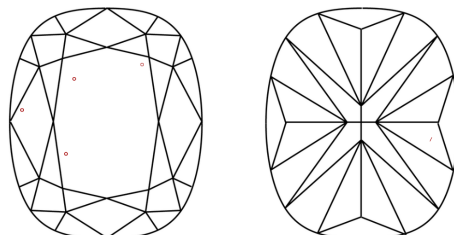
Polish **EXCELLENT**  
 Symmetry **EXCELLENT**  
 Fluorescence **NONE**  
 Inscription(s) **LABGROWN (IGI) LG555272235**  
 Comments: This Laboratory Grown Diamond was created by Chemical Vapor Deposition (CVD) growth process and may include post-growth treatment. Type IIa

LG555272235

**PROPORTIONS**



**CLARITY CHARACTERISTICS**



**KEY TO SYMBOLS**

Red symbols indicate internal characteristics.  
 Green symbols indicate external characteristics.

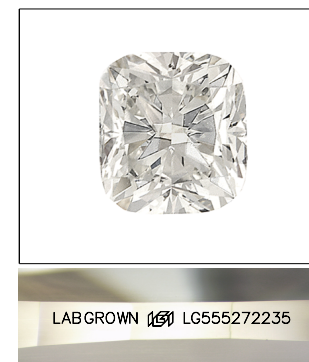
**LABORATORY GROWN  
DIAMOND REPORT**

**LABORATORY GROWN DIAMOND REPORT**

November 14, 2022  
 IGI Report Number **LG555272235**  
 Description **LABORATORY GROWN  
DIAMOND**  
 Shape and Cutting Style **CUSHION BRILLIANT**  
 Measurements **7.95 X 6.60 X 4.36 MM**  
**GRADING RESULTS**  
 Carat Weight **1.72 CARAT**  
 Color Grade **F**  
 Clarity Grade **SI 1**

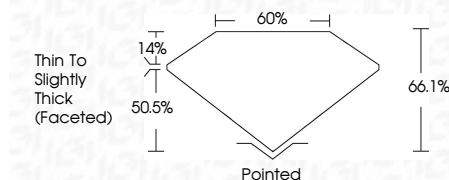
**GRADING SCALES**

COLOR GRADING SCALE	CL	NC	FT	VLT	LT	
	COLORLESS D-F	NEAR COLORLESS G-J	FAINT K-M	VERY LIGHT N-R	LIGHT S-Z	
CLARITY (10x) GRADING SCALE	FL	IF	VVS	VS	SI	I
	FLAWLESS INTERNALLY FLAWLESS	VERY VERY SLIGHTLY INCLUDED	VERY SLIGHTLY INCLUDED	SLIGHTLY INCLUDED	INCLUDED	



**LASERSCRIBE<sup>SM</sup>**

Sample Image Used



**ADDITIONAL GRADING INFORMATION**

Polish **EXCELLENT**  
 Symmetry **EXCELLENT**  
 Fluorescence **NONE**  
 Inscription(s) **LABGROWN (IGI) LG555272235**  
 Comments: This Laboratory Grown Diamond was created by Chemical Vapor Deposition (CVD) growth process and may include post-growth treatment. Type IIa



**IGI**



November 14, 2022  
 IGI Report No. **LG555272235**  
**CUSHION BRILLIANT**  
 7.95 X 6.60 X 4.36 MM  
 Carat Weight **1.72 CARAT**  
 Color Grade **F**  
 Clarity Grade **SI 1**  
 Depth **66.1%**  
 Table **60%**  
 Girdle **Thin To Slightly Thick (Faceted)**  
 Culet **Pointed**  
 Polish **EXCELLENT**  
 Symmetry **EXCELLENT**  
 Fluorescence **NONE**  
 Inscription(s) **LABGROWN (IGI) LG555272235**  
 Comments: This Laboratory Grown Diamond was created by Chemical Vapor Deposition (CVD) growth process and may include post-growth treatment. Type IIa