



ELECTRONIC COPY

LABORATORY GROWN DIAMOND REPORT

November 14, 2022
IGI Report Number LG555273116
Description LABORATORY GROWN DIAMOND
Shape and Cutting Style PRINCESS CUT
Measurements 6.68 X 6.64 X 4.82 MM

GRADING RESULTS

Carat Weight 1.91 CARAT
Color Grade E
Clarity Grade VS 1

ADDITIONAL GRADING INFORMATION

Polish EXCELLENT
Symmetry EXCELLENT
Fluorescence NONE

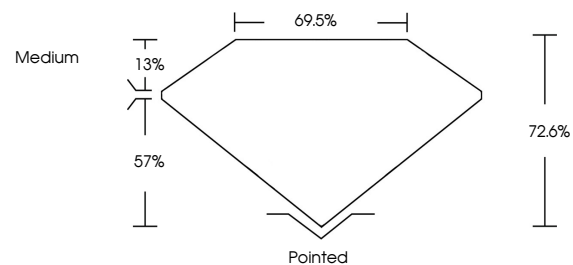
Inscription(s) LABGROWN (LGI) LG555273116

Comments: As Grown - No indication of post-growth treatment.

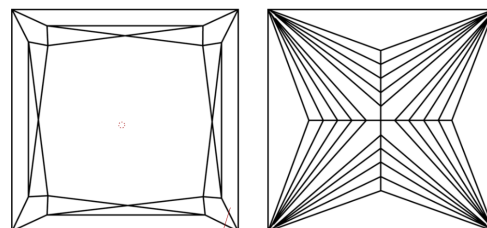
This Laboratory Grown Diamond was created by High Pressure High Temperature (HPHT) growth process. Type II

LG555273116

PROPORTIONS



CLARITY CHARACTERISTICS

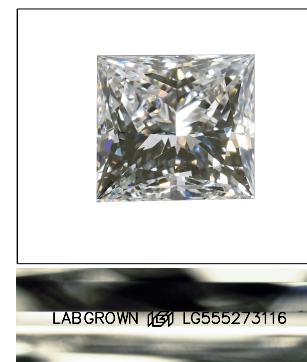


KEY TO SYMBOLS

Red symbols indicate internal characteristics.
Green symbols indicate external characteristics.

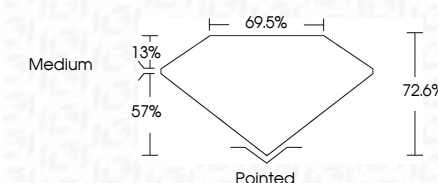
GRADING SCALES

Table with 2 rows and 5 columns. Row 1: COLOR GRADING SCALE (CL, NC, FT, VLT, LT) with corresponding descriptions. Row 2: CLARITY (10x) GRADING SCALE (FL, IF, VVS, VS, SI, I) with corresponding descriptions.



LASERSCRIBE SM
Sample Image Used

November 14, 2022
IGI Report Number LG555273116
Description LABORATORY GROWN DIAMOND
Shape and Cutting Style PRINCESS CUT
Measurements 6.68 X 6.64 X 4.82 MM
GRADING RESULTS
Carat Weight 1.91 CARAT
Color Grade E
Clarity Grade VS 1



ADDITIONAL GRADING INFORMATION

Polish EXCELLENT
Symmetry EXCELLENT
Fluorescence NONE
Inscription(s) LABGROWN (LGI) LG555273116

Comments: As Grown - No indication of post-growth treatment.
This Laboratory Grown Diamond was created by High Pressure High Temperature (HPHT) growth process. Type II



Summary of report details including date, report number, measurements, grading results, and additional information.