



**ELECTRONIC COPY**

## LABORATORY GROWN DIAMOND REPORT

November 15, 2022	
IGI Report Number	LG555273761
Description	LABORATORY GROWN DIAMOND
Shape and Cutting Style	ROUND BRILLIANT
Measurements	7.38 - 7.40 X 4.45 MM

## GRADING RESULTS

Carat Weight	1.51 CARAT
Color Grade	J
Clarity Grade	VS 1
Cut Grade	EXCELLENT

### ADDITIONAL GRADING INFORMATION

Polish	EXCELLENT
Symmetry	EXCELLENT
Fluorescence	NONE

Inscription(s) **LABGROWN**  **LG555273761**

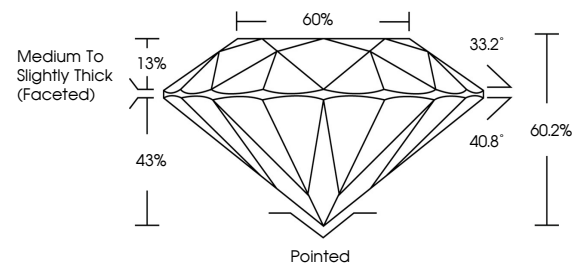
Comments: This Laboratory Grown Diamond was created by Chemical Vapor Deposition (CVD) growth process and may include post-growth treatment. Type IIa

## LABORATORY GROWN DIAMOND REPORT

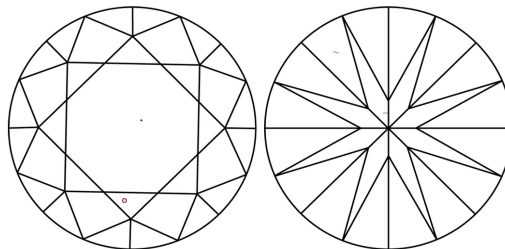
LG555273761

Report verification at [igi.org](http://igi.org)

## PROPORTIONS



## CLARITY CHARACTERISTICS



### KEY TO SYMBOLS

Red symbols indicate internal characteristics.  
Green symbols indicate external characteristics.

LABORATORY GROWN  
DIAMOND REPORT

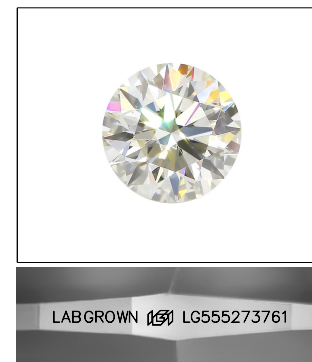
## GRADING SCALES

## CLARITY

IF	VVS <sup>1-2</sup>	VS <sup>1-2</sup>	SI <sup>1-2</sup>	I <sup>1-3</sup>
Internally Flawless	Very Very Slightly Included	Very Slightly Included	Slightly Included	Included

**COLOR**

D E F G H I J Faint Very Light Light

LASERSCRIBE<sup>SM</sup>

Sample Image Used



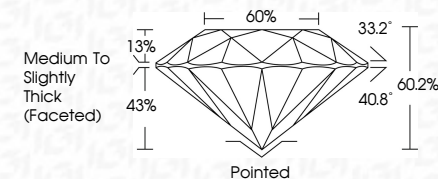
© IGI 2020, International Gemological Institute

FD - 10 20

**www.igi.org**

## LABORATORY GROWN DIAMOND REPORT

November 15, 2022	
IGI Report Number	LG555273761
Description	LABORATORY GROWN DIAMOND
Shape and Cutting Style	ROUND BRILLIANT
Measurements	7.38 - 7.40 X 4.45 MM
<b>GRADING RESULTS</b>	
Carat Weight	1.51 CARAT
Color Grade	J
Clarity Grade	VS 1
Cut Grade	EXCELLENT



### ADDITIONAL GRADING INFORMATION

Polish	EXCELLENT
Symmetry	EXCELLENT
Fluorescence	NONE
Inscription(s)	LABGROWN (15) LG555273761

Comments: This Laboratory Grown Diamond was created by Chemical Vapor Deposition (CVD) growth process and may include post-growth treatment.  
Type IIa



**Comments:**  
This Laboratory Grown Diamond was created by Chemical Vapor Deposition (CVD) growth process and may include post-growth treatment.