



**INTERNATIONAL
GEMOLOGICAL
INSTITUTE**

ELECTRONIC COPY

LABORATORY GROWN DIAMOND REPORT

November 15, 2022	
IGI Report Number	LG555273782
Description	LABORATORY GROWN DIAMOND
Shape and Cutting Style	ROUND BRILLIANT
Measurements	7.30 - 7.34 X 4.52 MM

GRADING RESULTS

Carat Weight	1.51 CARAT
Color Grade	J
Clarity Grade	VS 1
Cut Grade	EXCELLENT

ADDITIONAL GRADING INFORMATION

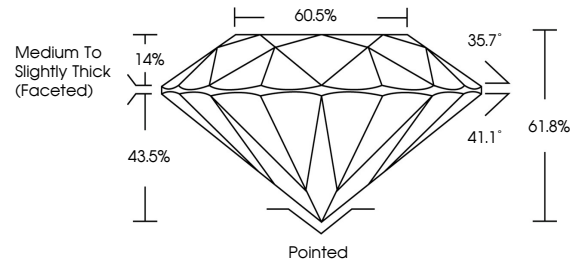
Polish	EXCELLENT
Symmetry	EXCELLENT
Fluorescence	NONE

Inscription(s) **LABGROWN  LG555273782**
 Comments: This Laboratory Grown Diamond was created by Chemical Vapor Deposition (CVD) growth process and may include post-growth treatment.
 Type IIa

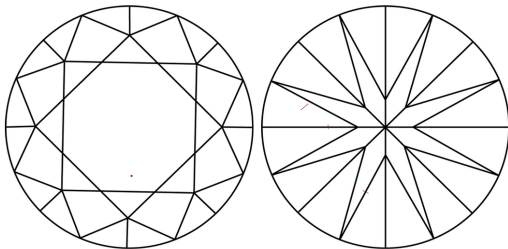
LABORATORY GROWN DIAMOND REPORT

LG555273782
Report verification at iglu.org

PROPORTIONS



CLARITY CHARACTERISTICS



KEY TO SYMBOLS

Red symbols indicate internal characteristics.
Green symbols indicate external characteristics.

LABORATORY GROWN
DIAMOND REPORT

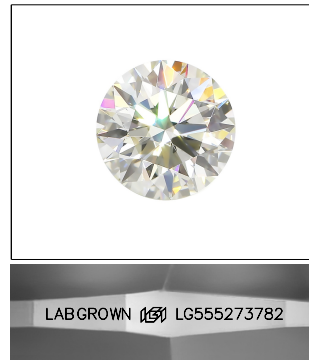
GRADING SCALES

CLARITY

IF	VVS ¹⁻²	VS ¹⁻²	SI ¹⁻²	I ¹⁻³
Internally Flawless	Very Very Slightly Included	Very Slightly Included	Slightly Included	Included

COLOR

D E F G H I J Faint Very Light Light

LASERSCRIBESM

Sample Image Used



© IGI 2020, International Gemological Institute

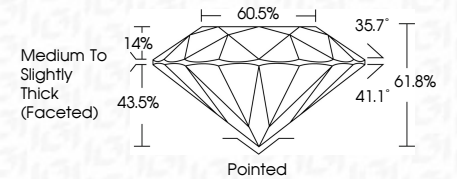
FD - 10 20

LABORATORY GROWN DIAMOND REPORT

November 15, 2022	
IGI Report Number	LG555273782
Description	LABORATORY GROWN DIAMOND
Shape and Cutting Style	ROUND BRILLIANT
Measurements	7.30 - 7.34 X 4.52 MM

GRADING RESULTS

Carat Weight	1.51 CARAT
Color Grade	J
Clarity Grade	VS 1
Cut Grade	EXCELLENT



ADDITIONAL GRADING INFORMATION

Polish	EXCELLENT
Symmetry	EXCELLENT
Fluorescence	NONE
Inscription(s)	LABGROWN (S) LG555273782

Comments: This Laboratory Grown Diamond was created by Chemical Vapor Deposition (CVD) growth process and may include post-growth treatment.
Type IIa



IGI

November 15, 2022	
Gf Report No LG655273782	
ROUND BRILLANT	
7.90 - 7.94 X 4.52 MM	
Color Weight	J
Color Grade	1.51 CARAT
Clarity Grade	Vs1
Cut Grade	EXCELLENT
Depth	61.8%
Table	60.6%
Girdle	Medium To Slightly Thick (forecast)
Culet	Pointed
Polish	EXCELLENT
Symmetry	EXCELLENT
Fluorescence	NONE
Inscriptions(s)	LABGROWN (g) LG655273782
Comments:	
	The Laboratory Grown Diamond was examined by the Gemological Institute of America (GIA) and found to be a Type IIa diamond. The diamond may have been treated with heat and/or irradiation to improve its color and clarity. The diamond may also have been treated with high pressure high temperature (HPHT) or chemical vapor deposition (CVD) to improve its growth characteristics.

Comments:
This Laboratory Grown Diamond was created by Chemical Vapor Deposition (CVD) growth process and may include post-growth treatment.
type IIa