



**ELECTRONIC COPY**

## LABORATORY GROWN DIAMOND REPORT

November 16, 2022	
IGI Report Number	LG555274122
Description	LABORATORY GROWN DIAMOND
Shape and Cutting Style	ROUND BRILLIANT
Measurements	7.36 - 7.41 X 4.51 MM

## GRADING RESULTS

Carat Weight	1.52 CARAT
Color Grade	J
Clarity Grade	VS 1
Cut Grade	IDEAL

### ADDITIONAL GRADING INFORMATION

Polish	EXCELLENT
Symmetry	EXCELLENT
Fluorescence	NONE

Inscription(s) LABGROWN  LG555274122

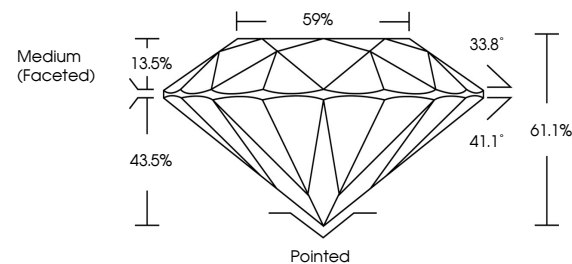
Comments: This Laboratory Grown Diamond was created by Chemical Vapor Deposition (CVD) growth process and may include post-growth treatment.  
Type IIa

## LABORATORY GROWN DIAMOND REPORT

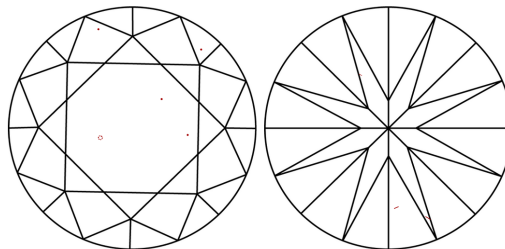
LG555274122

Report verification at [igi.org](http://igi.org)

## PROPORTIONS



## CLARITY CHARACTERISTICS



## KEY TO SYMBOLS

Red symbols indicate internal characteristics.  
Green symbols indicate external characteristics.

LABORATORY GROWN  
DIAMOND REPORT

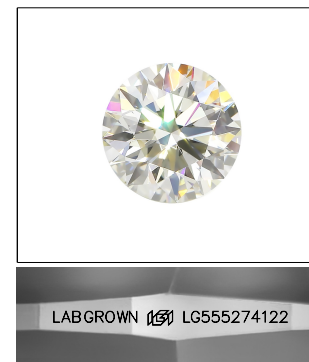
## GRADING SCALES

## CLARITY

IF	VVS <sup>1-2</sup>	VS <sup>1-2</sup>	SI <sup>1-2</sup>	I <sup>1-3</sup>
Internally Flawless	Very Very Slightly Included	Very Slightly Included	Slightly Included	Included

**COLOR**

D E F G H I J Faint Very Light Light

LASERSCRIBE<sup>SM</sup>

Sample Image Used



© IGI 2020, International Gemological Institute

FD - 10 20

**www.igi.org**

## LABORATORY GROWN DIAMOND REPORT

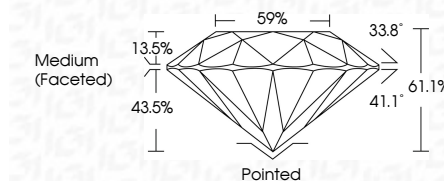
November 16, 2022	
IGI Report Number	LG555274122
Description	LABORATORY GROWN DIAMOND
Shape and Cutting Style	ROUND BRILLIANT
Measurements	7.36 - 7.41 X 4.51 MM

GRADING RESULTS	
Carat Weight	1.52 CARAT
Color Grade	J
Clarity Grade	VS 1
Cut Grade	IDEAL

### ADDITIONAL GRADING INFORMATION

Polish	EXCELLENT
Symmetry	EXCELLENT
Fluorescence	NONE
Inscription(s)	LABGROWN (15) LG555274122

Comments: This Laboratory Grown Diamond was created by Chemical Vapor Deposition (CVD) growth process and may include post-growth treatment.  
Type IIa



<b>November 16, 2022</b>	<b>1.52 CARAT J</b>
<b>(G) Report No GS659274122</b>	<b>IDeAL 61.1%</b>
<b>ROUND BRILLIANT</b>	<b>59%</b>
<b>7.36 - 7.41 X 4.51 MM</b>	<b>Medium (Fossilized)</b>
<b>Carat Weight</b>	<b>Painted</b>
<b>Color Grade</b>	<b>EXCELLENT</b>
<b>Clarity Grade</b>	<b>EXCELLENT</b>
<b>Cut Grade</b>	<b>NONE</b>
<b>Depth</b>	<b>LARGE GROWN (P) LGS659274122</b>
<b>Table</b>	
<b>Girdle</b>	
<b>Culet</b>	
<b>Polish</b>	
<b>Symmetry</b>	
<b>Fluorescence</b>	
<b>Inscriptions(s)</b>	
<b>Comments:</b>	
This Laboratory Grown Diamond was created by Chemical Vapor Deposition (CVD) growth process and may include post-growth treatment.	
Type IaA	