



ELECTRONIC COPY

LABORATORY GROWN DIAMOND REPORT

November 17, 2022
IGI Report Number LG555284208
Description LABORATORY GROWN DIAMOND
Shape and Cutting Style EMERALD CUT
Measurements 12.60 X 8.57 X 5.72 MM

GRADING RESULTS

Carat Weight 6.01 CARATS
Color Grade F
Clarity Grade VS 2

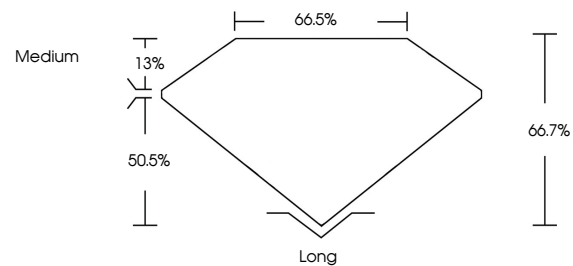
ADDITIONAL GRADING INFORMATION

Polish EXCELLENT
Symmetry EXCELLENT
Fluorescence NONE

Inscription(s) LABGROWN (LGI) LG555284208
Comments: This Laboratory Grown Diamond was created by Chemical Vapor Deposition (CVD) growth process and may include post-growth treatment. Type IIa

LG555284208

PROPORTIONS



CLARITY CHARACTERISTICS

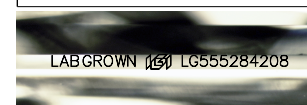


KEY TO SYMBOLS

Red symbols indicate internal characteristics.
Green symbols indicate external characteristics.

GRADING SCALES

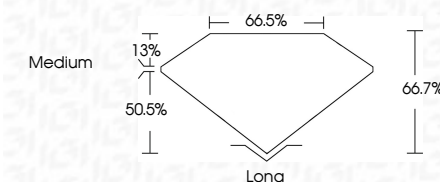
Table with 2 rows and 5 columns showing color and clarity grading scales. Color scale: CL (Colorless D-F), NC (Near Colorless G-J), FT (Faint K-M), VLT (Very Light N-R), LT (Light S-Z). Clarity scale: FL (Flawless Internally Flawless), IF (Internally Flawless), VVS (Very Very Slightly Included), VS (Very Slightly Included), SI (Slightly Included), I (Included).



LASERSCRIBESM

Sample Image Used

November 17, 2022
IGI Report Number LG555284208
Description LABORATORY GROWN DIAMOND
Shape and Cutting Style EMERALD CUT
Measurements 12.60 X 8.57 X 5.72 MM
GRADING RESULTS
Carat Weight 6.01 CARATS
Color Grade F
Clarity Grade VS 2



ADDITIONAL GRADING INFORMATION

Polish EXCELLENT
Symmetry EXCELLENT
Fluorescence NONE
Inscription(s) LABGROWN (LGI) LG555284208

Comments: This Laboratory Grown Diamond was created by Chemical Vapor Deposition (CVD) growth process and may include post-growth treatment. Type IIa



IGI



November 17, 2022
IGI Report No. LG555284208
EMERALD CUT
12.60 X 8.57 X 5.72 MM
Carat Weight 6.01 CARATS
Color Grade F
Clarity Grade VS 2
Depth 66.7%
Table 66.5%
Girdle Medium
Culet Long
Polish EXCELLENT
Symmetry EXCELLENT
Fluorescence NONE
Inscription(s) LABGROWN (LGI) LG555284208
Comments: This Laboratory Grown Diamond was created by Chemical Vapor Deposition (CVD) growth process and may include post-growth treatment. Type IIa