



ELECTRONIC COPY

LABORATORY GROWN DIAMOND REPORT

November 16, 2022
IGI Report Number LG555286527
Description LABORATORY GROWN DIAMOND
Shape and Cutting Style ROUND BRILLIANT
Measurements 7.75 - 7.80 X 4.80 MM

GRADING RESULTS

Carat Weight 1.78 CARAT
Color Grade H
Clarity Grade VS 2
Cut Grade IDEAL

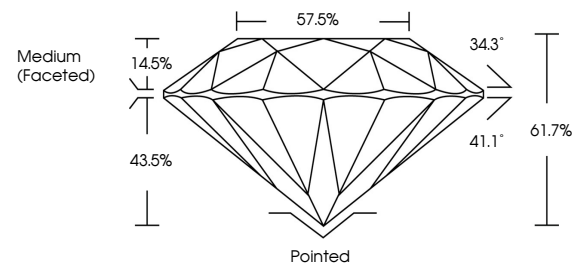
ADDITIONAL GRADING INFORMATION

Polish EXCELLENT
Symmetry EXCELLENT
Fluorescence NONE
Inscription(s) LABGROWN (IGI) LG555286527

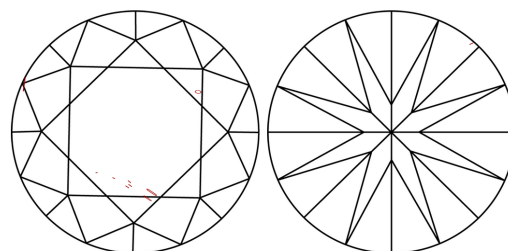
Comments: As Grown - No indication of post-growth treatment. This Laboratory Grown Diamond was created by High Pressure High Temperature (HPHT) growth process. Type II

LG555286527

PROPORTIONS



CLARITY CHARACTERISTICS



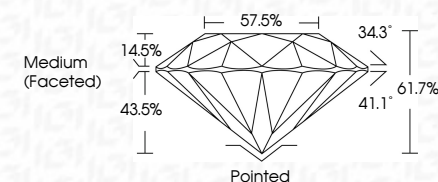
KEY TO SYMBOLS

Red symbols indicate internal characteristics. Green symbols indicate external characteristics.

GRADING SCALES

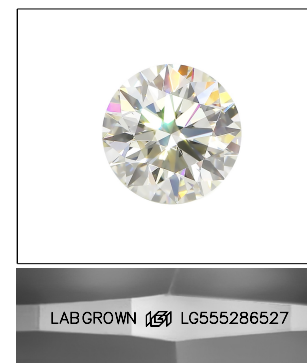
Table showing Color Grading Scale (CL to LT) and Clarity (10x) Grading Scale (FL to I).

November 16, 2022
IGI Report Number LG555286527
Description LABORATORY GROWN DIAMOND
Shape and Cutting Style ROUND BRILLIANT
Measurements 7.75 - 7.80 X 4.80 MM
GRADING RESULTS
Carat Weight 1.78 CARAT
Color Grade H
Clarity Grade VS 2
Cut Grade IDEAL



ADDITIONAL GRADING INFORMATION

Polish EXCELLENT
Symmetry EXCELLENT
Fluorescence NONE
Inscription(s) LABGROWN (IGI) LG555286527
Comments: As Grown - No indication of post-growth treatment. This Laboratory Grown Diamond was created by High Pressure High Temperature (HPHT) growth process. Type II



LASERSCRIBE SM Sample Image Used



November 16, 2022
IGI Report No. LG555286527
ROUND BRILLIANT
7.75 - 7.80 X 4.80 MM
1.78 CARAT
Color Grade H
Clarity Grade VS 2
Cut Grade IDEAL
Depth 61.7%
Table 57.5%
Grade Medium (Faceted)
Culet Pointed
Polish EXCELLENT
Symmetry EXCELLENT
Fluorescence NONE
Inscription(s) LABGROWN (IGI) LG555286527
Comments: As Grown - No indication of post-growth treatment. This Laboratory Grown Diamond was created by High Pressure High Temperature (HPHT) growth process. Type II