



**ELECTRONIC COPY**

## LABORATORY GROWN DIAMOND REPORT

November 18, 2022	
IGI Report Number	LG555289070
Description	LABORATORY GROWN DIAMOND
Shape and Cutting Style	ROUND BRILLIANT
Measurements	8.80 - 8.83 X 5.35 MM

## GRADING RESULTS

Carat Weight	2.56 CARATS
Color Grade	E
Clarity Grade	VS 1
Cut Grade	IDEAL

### ADDITIONAL GRADING INFORMATION

Polish	EXCELLENT
Symmetry	EXCELLENT
Fluorescence	NONE

Inscription(s) LABGROWN 163 LG555289070

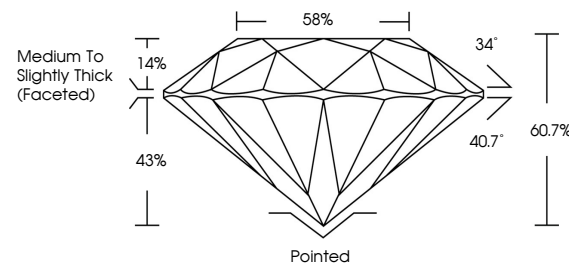
Comments: HEARTS & ARROWS  
This Laboratory Grown Diamond was created by  
Chemical Vapor Deposition (CVD) growth process and  
may include post-growth treatment.  
Type IIa

## LABORATORY GROWN DIAMOND REPORT

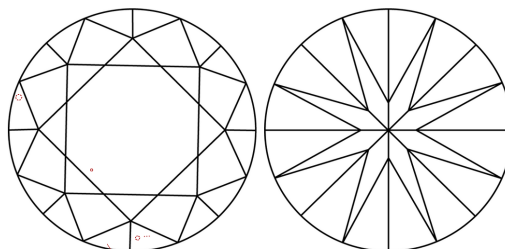
LG555289070

Report verification at [igi.org](http://igi.org)

## PROPORTIONS

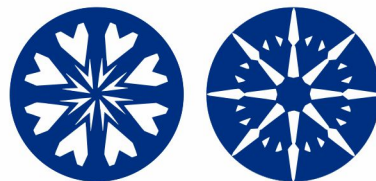


## CLARITY CHARACTERISTICS



### KEY TO SYMBOLS

Red symbols indicate internal characteristics.  
Green symbols indicate external characteristics.



**www.igi.org**

LABORATORY GROWN  
DIAMOND REPORT

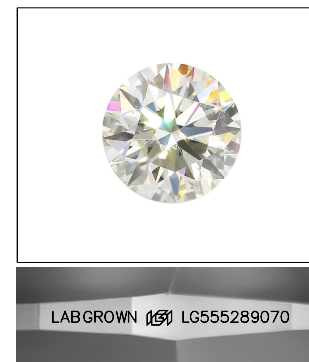
## GRADING SCALES

## CLARITY

IF	VVS <sup>1-2</sup>	VS <sup>1-2</sup>	SI <sup>1-2</sup>	I <sup>1-3</sup>
Internally Flawless	Very Very Slightly Included	Very Slightly Included	Slightly Included	Included

**COLOR**

D E F G H I J Faint Very Light Light

LASERSCRIBE<sup>SM</sup>

Sample Image Used



© IGI 2020, International Gemological Institute

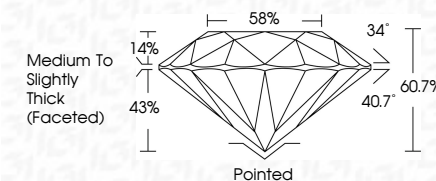
FD - 10 20

THIS DOCUMENT WAS PRODUCED WITH THE FOLLOWING SECURITY MEASURES: SPECIAL DOCUMENT PAPER, INK SCREENS, WATERMARK, BACKGROUND DESIGNS, HOLOGRAM AND OTHER SECURITY FEATURES NOT LISTED AND DO EXCEED DOCUMENT SECURITY INDUSTRY GUIDELINE

## LABORATORY GROWN DIAMOND REPORT

November 18, 2022	
IGI Report Number	LG555289070
Description	LABORATORY GROWN DIAMOND
Shape and Cutting Style	ROUND BRILLIANT
Measurements	8.80 - 8.83 X 5.35 MM

GRADING RESULTS	
Carat Weight	2.56 CARATS
Color Grade	E
Clarity Grade	VS 1
Cut Grade	IDEAL



### ADDITIONAL GRADING INFORMATION

Polish	EXCELLENT
Symmetry	EXCELLENT
Fluorescence	NONE
Inscription(s)	LABGROWN (157) LG555289070

Comments: HEARTS & ARROWS  
This Laboratory Grown Diamond was created by  
Chemical Vapor Deposition (CVD) growth process and  
may include post-growth treatment.  
Type IIa



November 18, 2022  
IGI Report No LG55289070  
ROUND BRILLIANT

6.80 - 6.83 X 6.35 MM		2.65 CARATS	
Carat Weight	Color Grade	Clarity Grade	VS 1
		Cut Grade	IDEAL
		Depth	60.7%
		Table	58%
		Grade	Medium to slightly Thick (Faceted)
Culet	Polish	Symmetry	Flawless
		Fluorescence	None
		Inscriptions	LAUREN 1999

Comments:  
 DEARTS & ARROWS  
 Laboratory Grown Diamond was  
 treated by Chemical Vapor Deposition  
 (CVD) growth process and may include  
 post-growth treatment.