



**ELECTRONIC COPY**

## LABORATORY GROWN DIAMOND REPORT

|                         |                             |
|-------------------------|-----------------------------|
| November 21, 2022       |                             |
| IGI Report Number       | LG555290765                 |
| Description             | LABORATORY GROWN<br>DIAMOND |
| Shape and Cutting Style | ROUND BRILLIANT             |
| Measurements            | 8.57 - 8.62 X 5.33 MM       |

## GRADING RESULTS

|               |             |
|---------------|-------------|
| Carat Weight  | 2.44 CARATS |
| Color Grade   | G           |
| Clarity Grade | SI 1        |
| Cut Grade     | IDEAL       |

### ADDITIONAL GRADING INFORMATION

|              |           |
|--------------|-----------|
| Polish       | EXCELLENT |
| Symmetry     | EXCELLENT |
| Fluorescence | NONE      |

Inscription(s) LABGROWN 16 LG555290765

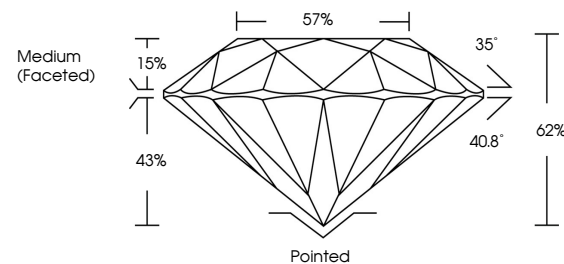
Comments: This Laboratory Grown Diamond was created by Chemical Vapor Deposition (CVD) growth process and may include post-growth treatment.  
Type IIa

## LABORATORY GROWN DIAMOND REPORT

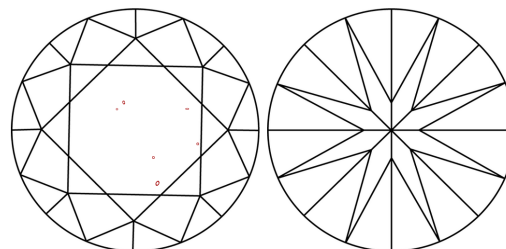
LG555290765

Report verification at [igi.org](http://igi.org)

## PROPORTIONS



## CLARITY CHARACTERISTICS



## KEY TO SYMBOLS

Red symbols indicate internal characteristics.  
Green symbols indicate external characteristics.

LABORATORY GROWN  
DIAMOND REPORT

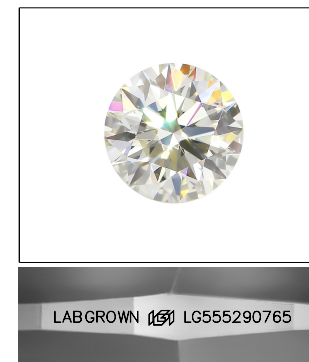
## GRADING SCALES

## CLARITY

| IF                     | VVS <sup>1-2</sup>             | VS <sup>1-2</sup>         | SI <sup>1-2</sup>    | I <sup>1-3</sup> |
|------------------------|--------------------------------|---------------------------|----------------------|------------------|
| Internally<br>Flawless | Very Very<br>Slightly Included | Very<br>Slightly Included | Slightly<br>Included | Included         |

**COLOR**

D E F G H I J Faint Very Light Light

LASERSCRIBE<sup>SM</sup>

Sample Image Used



© IGI 2020, International Gemological Institute

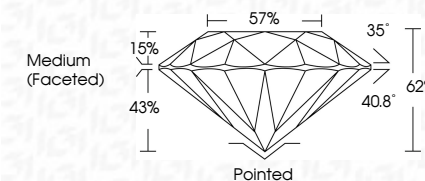
FD - 10 20

**www.igi.org**

## LABORATORY GROWN DIAMOND REPORT

|                         |                             |
|-------------------------|-----------------------------|
| November 21, 2022       |                             |
| IGI Report Number       | LG555290765                 |
| Description             | LABORATORY GROWN<br>DIAMOND |
| Shape and Cutting Style | ROUND BRILLIANT             |
| Measurements            | 8.57 - 8.62 X 5.33 MM       |

| GRADING RESULTS |             |
|-----------------|-------------|
| Carat Weight    | 2.44 CARATS |
| Color Grade     | G           |
| Clarity Grade   | SI 1        |
| Cut Grade       | IDEAL       |



### ADDITIONAL GRADING INFORMATION

|                |                            |
|----------------|----------------------------|
| Polish         | EXCELLENT                  |
| Symmetry       | EXCELLENT                  |
| Fluorescence   | NONE                       |
| Inscription(s) | LABGROWN (157) LG555290765 |

Comments: This Laboratory Grown Diamond was created by Chemical Vapor Deposition (CVD) growth process and may include post-growth treatment.  
Type IIa



**Comments:**  
This Laboratory Grown Diamond was created by Chemical Vapor Deposition (CVD) growth process and may include post-growth treatment.