



ELECTRONIC COPY

LABORATORY GROWN DIAMOND REPORT

November 22, 2022	
IGI Report Number	LG557212786
Description	LABORATORY GROWN DIAMOND
Shape and Cutting Style	ROUND BRILLIANT
Measurements	7.80 - 7.84 X 4.66 MM

GRADING RESULTS

Carat Weight	1.75 CARAT
Color Grade	G
Clarity Grade	SI 1
Cut Grade	IDEAL

ADDITIONAL GRADING INFORMATION

Polish	EXCELLENT
Symmetry	EXCELLENT
Fluorescence	NONE

Inscription(s) LABGROWN  LG557212786

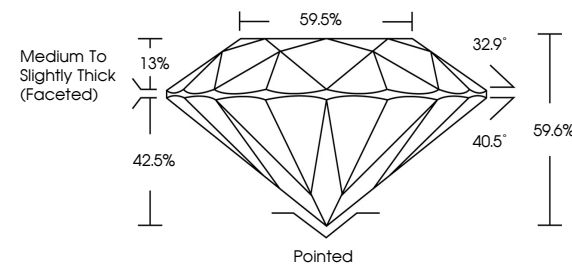
Comments: This Laboratory Grown Diamond was created by Chemical Vapor Deposition (CVD) growth process and may include post-growth treatment.
Type IIa

LABORATORY GROWN DIAMOND REPORT

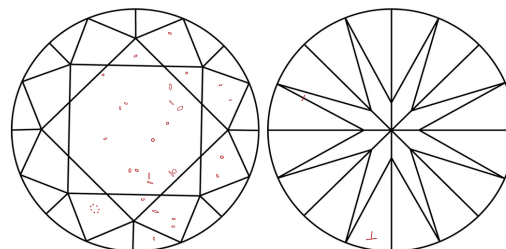
LG557212786

Report verification at igi.org

PROPORTIONS



CLARITY CHARACTERISTICS



KEY TO SYMBOLS

Red symbols indicate internal characteristics.
Green symbols indicate external characteristics.

LABORATORY GROWN
DIAMOND REPORT

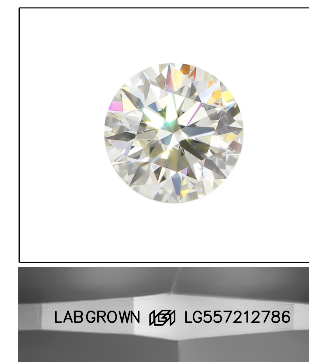
GRADING SCALES

CLARITY

IF	VVS ¹⁻²	VS ¹⁻²	SI ¹⁻²	I ¹⁻³
Internally Flawless	Very Very Slightly Included	Very Slightly Included	Slightly Included	Included

COLOR

D E F G H I J Faint Very Light Light

LASERSCRIBESM

Sample Image Used



© IGI 2020, International Gemological Institute

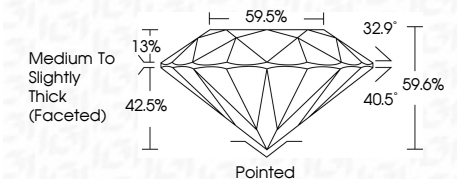
FD - 10 20

www.igi.org

LABORATORY GROWN DIAMOND REPORT

November 22, 2022	
IGI Report Number	LG557212786
Description	LABORATORY GROWN DIAMOND
Shape and Cutting Style	ROUND BRILLIANT
Measurements	7.80 - 7.84 X 4.66 MM

GRADING RESULTS	
Carat Weight	1.75 CARAT
Color Grade	G
Clarity Grade	SI 1
Cut Grade	IDEAL



ADDITIONAL GRADING INFORMATION

Polish	EXCELLENT
Symmetry	EXCELLENT
Fluorescence	NONE
Inscription(s)	LABGROWN (151) LG557212786

Comments: This Laboratory Grown Diamond was created by Chemical Vapor Deposition (CVD) growth process and may include post-growth treatment.
Type IIa



IGI

November 22, 2022
IGI Report No LG557212786
ROUND BRILLIANT

1.75 CARAT G	Carat Weight	1.75 CARAT
	Color Grade	I1
	Clarity Grade	IDEAL
	Cut Grade	59.6%
	Depth	59.5%
	Table	Medium to slightly thick (faceted)
	Graile	Polished
	Culet	EXCELLENT
	Polish	EXCELLENT
	Symmetry	NONE
Fluorescence	LARGELY NONE	
Inscriptions	LARGE(1278)	

Comments:
This Laboratory Grown Diamond was created by Chemical Vapor Deposition (CVD) growth process and may include post-growth treatment.
Type IIa

Comments:
This Laboratory Grown Diamond was
treated by Chemical Vapor Deposition
(CVD) growth process and may include
post-growth treatment.
Type IIa