



**INTERNATIONAL  
GEMOLOGICAL  
INSTITUTE**

**ELECTRONIC COPY**

**LABORATORY GROWN  
DIAMOND REPORT**

**LG557213084**

**IGI LABORATORY GROWN  
DIAMOND ID REPORT**

November 22, 2022

IGI Report Number **LG557213084**

**CUT CORNERED RECTANGULAR  
MODIFIED BRILLIANT**

**6.75 X 4.48 X 2.97 MM**

Carat Weight 0.80 CARAT  
Color Grade F  
Clarity Grade VS 1  
Polish VERY GOOD  
Symmetry VERY GOOD  
Fluorescence NONE  
Inscription(s) LABGROWN IGI LG557213084

Comments: This Laboratory Grown Diamond was created by Chemical Vapor Deposition (CVD) growth process and may include post-growth treatment. Type IIa

**LABORATORY GROWN DIAMOND REPORT**

**IGI LABORATORY GROWN DIAMOND IDENTIFICATION REPORT**

November 22, 2022

IGI Report Number LG557213084

Description LABORATORY GROWN DIAMOND  
Shape and Cutting Style CUT CORNERED RECTANGULAR MODIFIED BRILLIANT

Measurements 6.75 X 4.48 X 2.97 MM

**GRADING RESULTS**

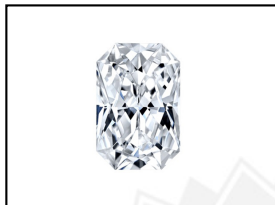
Carat Weight 0.80 CARAT  
Color Grade F  
Clarity Grade VS 1

**ADDITIONAL GRADING INFORMATION**

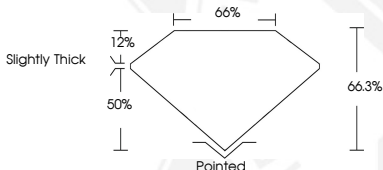
Polish VERY GOOD  
Symmetry VERY GOOD  
Fluorescence NONE

Inscription(s) LABGROWN IGI LG557213084

Comments: This Laboratory Grown Diamond was created by Chemical Vapor Deposition (CVD) growth process and may include post-growth treatment. Type IIa



**LASERSCRIBE<sup>SM</sup>**  
Sample Images Used



**IGI LABORATORY GROWN  
DIAMOND ID REPORT**

November 22, 2022

IGI Report Number **LG557213084**

**CUT CORNERED RECTANGULAR  
MODIFIED BRILLIANT**

**6.75 X 4.48 X 2.97 MM**

Carat Weight 0.80 CARAT  
Color Grade F  
Clarity Grade VS 1  
Polish VERY GOOD  
Symmetry VERY GOOD  
Fluorescence NONE  
Inscription(s) LABGROWN IGI LG557213084

Comments: This Laboratory Grown Diamond was created by Chemical Vapor Deposition (CVD) growth process and may include post-growth treatment. Type IIa

THIS DOCUMENT WAS PRODUCED WITH THE FOLLOWING SECURITY MEASURES: SPECIAL DOCUMENT PAPER, INK SCREENS, WATERMARK, BACKGROUND DESIGN, HOLOGRAM AND OTHER SECURITY FEATURES NOT LISTED AND DO EXCEED DOCUMENT SECURITY INDUSTRY GUIDELINES.

For terms & conditions and to verify this report, please visit [www.igi.org](http://www.igi.org)