



**INTERNATIONAL
GEMOLOGICAL
INSTITUTE**

LABORATORY GROWN DIAMOND REPORT

IGI LABORATORY GROWN DIAMOND IDENTIFICATION REPORT

December 13, 2022
 IGI Report Number LG557221916
 Description LABORATORY GROWN DIAMOND
 Shape and Cutting Style ROUND BRILLIANT
 Measurements 4.69 - 4.72 X 2.79 MM

GRADING RESULTS

Carat Weight 0.38 CARAT
 Color Grade FANCY INTENSE PINK
 Clarity Grade VS 2
 Cut Grade VERY GOOD

ADDITIONAL GRADING INFORMATION

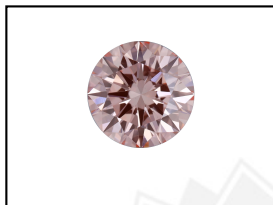
Polish GOOD
 Symmetry GOOD
 Fluorescence SLIGHT
 Inscription(s) LABGROWN (IGI) LG557221916

Comments: This Laboratory Grown Diamond was created by Chemical Vapor Deposition (CVD) growth process. Indications of post-growth treatment.

ELECTRONIC COPY

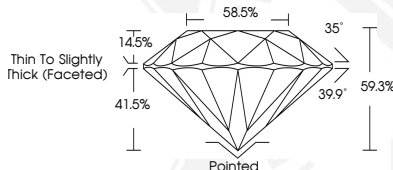
**LABORATORY GROWN
DIAMOND REPORT**

LG557221916



LABGROWN (IGI) LG557221916

LASERSCRIBESM
Sample Images Used



**IGI LABORATORY GROWN
DIAMOND ID REPORT**

December 13, 2022
 IGI Report Number **LG557221916**
ROUND BRILLIANT
4.69 - 4.72 X 2.79 MM
 Carat Weight 0.38 CARAT
 Color Grade FANCY INTENSE PINK
 Clarity Grade VS 2
 Cut Grade VERY GOOD
 Polish GOOD
 Symmetry GOOD
 Fluorescence SLIGHT
 Inscription(s) LABGROWN (IGI) LG557221916

Comments: This Laboratory Grown Diamond was created by Chemical Vapor Deposition (CVD) growth process. Indications of post-growth treatment.

**IGI LABORATORY GROWN
DIAMOND ID REPORT**

December 13, 2022
 IGI Report Number **LG557221916**
ROUND BRILLIANT
4.69 - 4.72 X 2.79 MM
 Carat Weight 0.38 CARAT
 Color Grade FANCY INTENSE PINK
 Clarity Grade VS 2
 Cut Grade VERY GOOD
 Polish GOOD
 Symmetry GOOD
 Fluorescence SLIGHT
 Inscription(s) LABGROWN (IGI) LG557221916

Comments: This Laboratory Grown Diamond was created by Chemical Vapor Deposition (CVD) growth process. Indications of post-growth treatment.

THIS DOCUMENT WAS PRODUCED WITH THE FOLLOWING SECURITY MEASURES: SPECIAL DOCUMENT PAPER, INK SCREENS, WATERMARK, BACKGROUND DESIGN, HOLOGRAM AND OTHER SECURITY FEATURES NOT LISTED AND DO EXCEED DOCUMENT SECURITY INDUSTRY GUIDELINES.

For terms & conditions and to verify this report, please visit www.igi.org