



**INTERNATIONAL  
GEMOLOGICAL  
INSTITUTE**

**ELECTRONIC COPY**

**LABORATORY GROWN  
DIAMOND REPORT**

**LG557221927**

**IGI LABORATORY GROWN  
DIAMOND ID REPORT**

December 13, 2022

IGI Report Number **LG557221927**

**ROUND BRILLIANT**

**4.77 - 4.83 X 2.93 MM**

Carat Weight	0.41 CARAT
Color Grade	FANCY VIVID PINK
Clarity Grade	SI 1
Cut Grade	VERY GOOD
Polish	GOOD
Symmetry	GOOD
Fluorescence	SLIGHT
Inscription(s)	LABGROWN (LGI) LG557221927

Comments: This Laboratory Grown Diamond was created by Chemical Vapor Deposition (CVD) growth process. Indications of post-growth treatment.

**LABORATORY GROWN DIAMOND REPORT**

**IGI LABORATORY GROWN DIAMOND IDENTIFICATION REPORT**

December 13, 2022

IGI Report Number

LG557221927

Description

LABORATORY GROWN DIAMOND

Shape and Cutting Style

ROUND BRILLIANT

Measurements

4.77 - 4.83 X 2.93 MM

**GRADING RESULTS**

Carat Weight

0.41 CARAT

Color Grade

FANCY VIVID PINK

Clarity Grade

SI 1

Cut Grade

VERY GOOD

**ADDITIONAL GRADING INFORMATION**

Polish

GOOD

Symmetry

GOOD

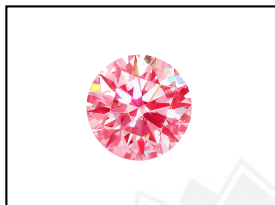
Fluorescence

SLIGHT

Inscription(s)

LABGROWN (LGI) LG557221927

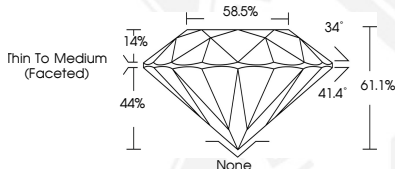
Comments: This Laboratory Grown Diamond was created by Chemical Vapor Deposition (CVD) growth process. Indications of post-growth treatment.



LABGROWN (LGI) LG557221927

**LASERSCRIBE<sup>SM</sup>**

Sample Images Used



**IGI LABORATORY GROWN  
DIAMOND ID REPORT**

December 13, 2022

IGI Report Number **LG557221927**

**ROUND BRILLIANT**

**4.77 - 4.83 X 2.93 MM**

Carat Weight	0.41 CARAT
Color Grade	FANCY VIVID PINK
Clarity Grade	SI 1
Cut Grade	VERY GOOD
Polish	GOOD
Symmetry	GOOD
Fluorescence	SLIGHT
Inscription(s)	LABGROWN (LGI) LG557221927

Comments: This Laboratory Grown Diamond was created by Chemical Vapor Deposition (CVD) growth process. Indications of post-growth treatment.

THIS DOCUMENT WAS PRODUCED WITH THE FOLLOWING SECURITY MEASURES: SPECIAL DOCUMENT PAPER, INK SCREENS, WATERMARK, BACKGROUND DESIGN, HOLOGRAM AND OTHER SECURITY FEATURES NOT LISTED AND DO EXCEED DOCUMENT SECURITY INDUSTRY GUIDELINES.

For terms & conditions and to verify this report, please visit [www.igi.org](http://www.igi.org)