



**INTERNATIONAL  
GEMOLOGICAL  
INSTITUTE**

**ELECTRONIC COPY**

**LABORATORY GROWN  
DIAMOND REPORT**

**LG557239493**

**IGI LABORATORY GROWN  
DIAMOND ID REPORT**

November 29, 2022

IGI Report Number **LG557239493**

**SQUARE CUSHION BRILLIANT**

**5.77 X 5.52 X 3.85 MM**

Carat Weight	0.99 CARAT
Color Grade	D
Clarity Grade	VS 1
Polish	EXCELLENT
Symmetry	VERY GOOD
Fluorescence	NONE
Inscription(s)	LABGROWN (LGI) LG557239493

Comments: As Grown - No indication of post-growth treatment.  
This Laboratory Grown Diamond was created by High Pressure High Temperature (HPHT) growth process.  
Type II

**LABORATORY GROWN DIAMOND REPORT**

**IGI LABORATORY GROWN DIAMOND IDENTIFICATION REPORT**

November 29, 2022

IGI Report Number **LG557239493**

Description **LABORATORY GROWN DIAMOND**

Shape and Cutting Style **SQUARE CUSHION BRILLIANT**

Measurements **5.77 X 5.52 X 3.85 MM**

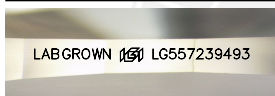
**GRADING RESULTS**

Carat Weight	0.99 CARAT
Color Grade	D
Clarity Grade	VS 1

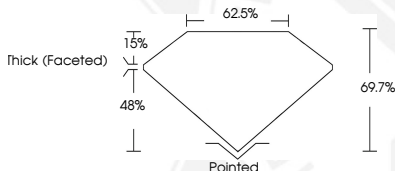
**ADDITIONAL GRADING INFORMATION**

Polish	EXCELLENT
Symmetry	VERY GOOD
Fluorescence	NONE
Inscription(s)	LABGROWN (LGI) LG557239493

Comments: As Grown - No indication of post-growth treatment.  
This Laboratory Grown Diamond was created by High Pressure High Temperature (HPHT) growth process.  
Type II



**LASERSCRIBE<sup>SM</sup>**  
Sample Images Used



THIS DOCUMENT WAS PRODUCED WITH THE FOLLOWING SECURITY MEASURES: SPECIAL DOCUMENT PAPER, INK SCREENS, WATERMARK, BACKGROUND DESIGN, HOLOGRAM AND OTHER SECURITY FEATURES NOT LISTED AND DO EXCEED DOCUMENT SECURITY INDUSTRY GUIDELINES.

For terms & conditions and to verify this report, please visit [www.igi.org](http://www.igi.org)

**IGI LABORATORY GROWN  
DIAMOND ID REPORT**

November 29, 2022

IGI Report Number **LG557239493**

**SQUARE CUSHION BRILLIANT**

**5.77 X 5.52 X 3.85 MM**

Carat Weight	0.99 CARAT
Color Grade	D
Clarity Grade	VS 1
Polish	EXCELLENT
Symmetry	VERY GOOD
Fluorescence	NONE
Inscription(s)	LABGROWN (LGI) LG557239493

Comments: As Grown - No indication of post-growth treatment.  
This Laboratory Grown Diamond was created by High Pressure High Temperature (HPHT) growth process.  
Type II