



**ELECTRONIC COPY**

LABORATORY GROWN DIAMOND REPORT

LG557249955

Report verification at [igi.org](http://igi.org)

LABORATORY GROWN  
DIAMOND REPORT

LABORATORY GROWN DIAMOND REPORT

LABORATORY GROWN DIAMOND REPORT

November 30, 2022  
IGI Report Number **LG557249955**  
Description **LABORATORY GROWN  
DIAMOND**  
Shape and Cutting Style **ROUND BRILLIANT**  
Measurements **11.43 - 11.46 X 7.05 MM**

**GRADING RESULTS**

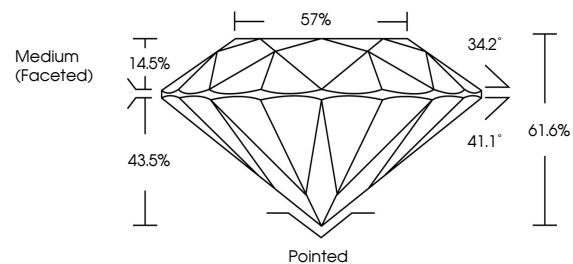
Carat Weight **5.63 CARATS**  
Color Grade **G**  
Clarity Grade **VS 1**  
Cut Grade **IDEAL**

**ADDITIONAL GRADING INFORMATION**

Polish **EXCELLENT**  
Symmetry **EXCELLENT**  
Fluorescence **NONE**  
Inscription(s) **LABGROWN (LGI) LG557249955**

Comments: HEARTS & ARROWS  
This Laboratory Grown Diamond was created by  
Chemical Vapor Deposition (CVD) growth process and  
may include post-growth treatment.  
Type IIa

**PROPORTIONS**



**CLARITY CHARACTERISTICS**



**KEY TO SYMBOLS**

Red symbols indicate internal characteristics.  
Green symbols indicate external characteristics.



[www.igi.org](http://www.igi.org)

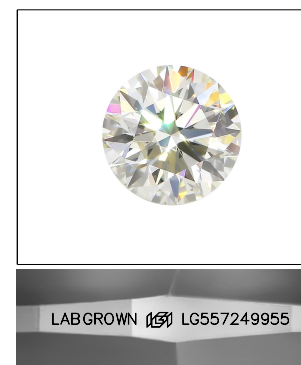
**GRADING SCALES**

**CLARITY**

| IF                     | VVS <sup>1-2</sup>             | VS <sup>1-2</sup>         | SI <sup>1-2</sup>    | I <sup>1-3</sup> |
|------------------------|--------------------------------|---------------------------|----------------------|------------------|
| Internally<br>Flawless | Very Very<br>Slightly Included | Very<br>Slightly Included | Slightly<br>Included | Included         |

**COLOR**

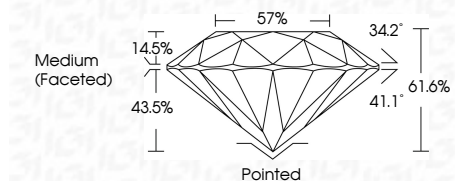
| D | E | F | G | H | I | J | Faint | Very Light | Light |
|---|---|---|---|---|---|---|-------|------------|-------|
|---|---|---|---|---|---|---|-------|------------|-------|



LASERSCRIBE<sup>SM</sup>

Sample Image Used

November 30, 2022  
IGI Report Number **LG557249955**  
Description **LABORATORY GROWN  
DIAMOND**  
Shape and Cutting Style **ROUND BRILLIANT**  
Measurements **11.43 - 11.46 X 7.05 MM**  
**GRADING RESULTS**  
Carat Weight **5.63 CARATS**  
Color Grade **G**  
Clarity Grade **VS 1**  
Cut Grade **IDEAL**



**ADDITIONAL GRADING INFORMATION**

Polish **EXCELLENT**  
Symmetry **EXCELLENT**  
Fluorescence **NONE**  
Inscription(s) **LABGROWN (LGI) LG557249955**

Comments: HEARTS & ARROWS  
This Laboratory Grown Diamond was created by  
Chemical Vapor Deposition (CVD) growth process and  
may include post-growth treatment.  
Type IIa



**IGI**

|                   |                           |                 |             |       |       |        |       |        |                  |              |                 |   |      |                            |
|-------------------|---------------------------|-----------------|-------------|-------|-------|--------|-------|--------|------------------|--------------|-----------------|---|------|----------------------------|
| November 30, 2022 | IGI Report No LG557249955 | ROUND BRILLIANT | 5.63 CARATS | G     | VS 1  | IDEAL  | 61.6% | 57%    | Medium (Faceted) | Pointed      | EXCELLENT       | EXCELLENT   | NONE | LABGROWN (LGI) LG557249955 |
| Carat Weight      | Color Grade               | Clarity Grade   | Cut Grade   | Depth | Table | Graile | Culet | Polish | Symmetry         | Fluorescence | Inscriptions(s) | Comments:<br>HEARTS & ARROWS<br>This Laboratory Grown Diamond was<br>created by Chemical Vapor Deposition<br>(CVD) growth process and may include<br>post-growth treatment.<br>Type IIa |      |                            |

