



ELECTRONIC COPY

LABORATORY GROWN DIAMOND REPORT

December 10, 2022	
IGI Report Number	LG557252177
Description	LABORATORY GROWN DIAMOND
Shape and Cutting Style	EMERALD CUT
Measurements	10.81 X 6.98 X 4.72 MM

GRADING RESULTS

Carat Weight	3.52 CARATS
Color Grade	I
Clarity Grade	VS 2

ADDITIONAL GRADING INFORMATION

Polish	EXCELLENT
Symmetry	EXCELLENT
Fluorescence	NONE

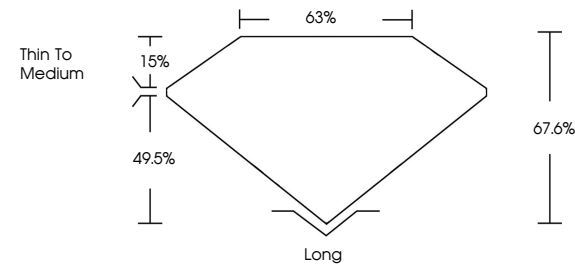
Inscription(s) **LABGROWN 131 LG557252177**
 Comments: This Laboratory Grown Diamond was created by Chemical Vapor Deposition (CVD) growth process and may include post-growth treatment.
 Type IIa

LABORATORY GROWN DIAMOND REPORT

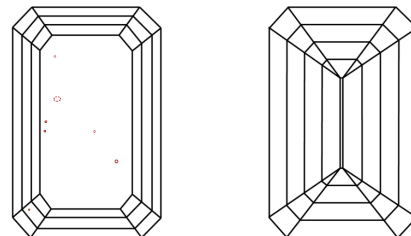
LG557252177

Report verification at igi.org

PROPORTIONS



CLARITY CHARACTERISTICS



KEY TO SYMBOLS

Red symbols indicate internal characteristics.
Green symbols indicate external characteristics.

LABORATORY GROWN
DIAMOND REPORT

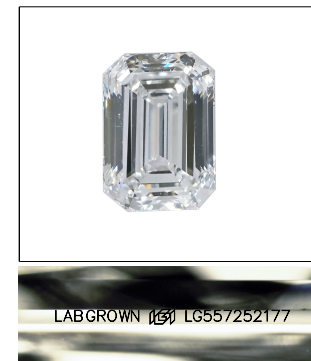
GRADING SCALES

CLARITY

IF	VVS ¹⁻²	VS ¹⁻²	SI ¹⁻²	I ¹⁻³
Internally Flawless	Very Very Slightly Included	Very Slightly Included	Slightly Included	Included

COLOR

D E F G H I J Faint Very Light Light

LASERSCRIBESM

Sample Image Used



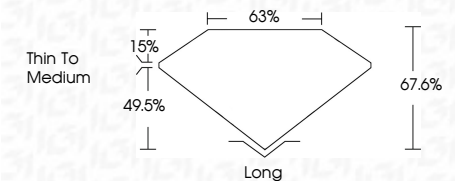
© IGI 2020, International Gemological Institute

FD - 10 20

www.igi.org

LABORATORY GROWN DIAMOND REPORT

December 10, 2022	
IGI Report Number	LG557252177
Description	LABORATORY GROWN DIAMOND
Shape and Cutting Style	EMERALD CUT
Measurements	10.81 X 6.98 X 4.72 MM
GRADING RESULTS	
Carat Weight	3.52 CARATS
Color Grade	I
Clarity Grade	VS 2



ADDITIONAL GRADING INFORMATION

Polish	EXCELLENT
Symmetry	EXCELLENT
Fluorescence	NONE
Inscription(s)	LABGROWN (15) LG557252177

Comments: This Laboratory Grown Diamond was created by Chemical Vapor Deposition (CVD) growth process and may include post-growth treatment.
Type IIa



December 10, 2022
 IGI Report No LG557252177
 EMERALD CITT

10.61 X 6.96 X 4.72 MM	3.52 CARATS	VS 2	Long
Carat Weight		67.6%	EXCELLENT
Color Grade		65%	EXCELLENT
		Thin to Medium	NONE
Clarity Grade			LARGESROWN (96)
Depth			LG567262777
Table			
Girdle			
Culet			
Polish			
Symmetry			
Fluorescence			
Inscriptions			

Comments:
This Laboratory Grown Diamond was created by Chemical Vapor Deposition (CVD) growth process and may include post-growth treatment.
Type IIa