



**INTERNATIONAL  
GEMOLOGICAL  
INSTITUTE**

**ELECTRONIC COPY**

**LABORATORY GROWN  
DIAMOND REPORT**

**LG559275416**

**IGI LABORATORY GROWN  
DIAMOND ID REPORT**

December 6, 2022  
IGI Report Number **LG559275416**  
**ROUND BRILLIANT**  
**5.37 - 5.39 X 3.41 MM**  
Carat Weight 0.61 CARAT  
Color Grade E  
Clarity Grade IF  
Cut Grade EXCELLENT  
Polish EXCELLENT  
Symmetry EXCELLENT  
Fluorescence NONE  
Inscription(s) LABGROWN (IGI) LG559275416

Comments: As Grown - No indication of post-growth treatment.  
This Laboratory Grown Diamond was created by High Pressure High Temperature (HPHT) growth process.  
Type II

**LABORATORY GROWN DIAMOND REPORT**

**IGI LABORATORY GROWN DIAMOND IDENTIFICATION REPORT**

December 6, 2022  
IGI Report Number LG559275416  
Description LABORATORY GROWN DIAMOND  
Shape and Cutting Style ROUND BRILLIANT  
Measurements 5.37 - 5.39 X 3.41 MM

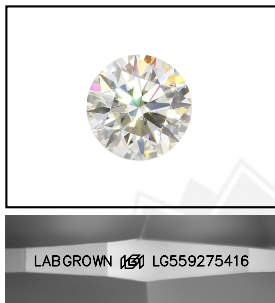
**GRADING RESULTS**

Carat Weight 0.61 CARAT  
Color Grade E  
Clarity Grade INTERNALLY FLAWLESS  
Cut Grade EXCELLENT

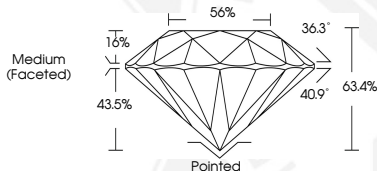
**ADDITIONAL GRADING INFORMATION**

Polish EXCELLENT  
Symmetry EXCELLENT  
Fluorescence NONE  
Inscription(s) LABGROWN (IGI) LG559275416

Comments: As Grown - No indication of post-growth treatment.  
This Laboratory Grown Diamond was created by High Pressure High Temperature (HPHT) growth process.  
Type II



**LASERSCRIBE<sup>SM</sup>**  
Sample Images Used



**IGI LABORATORY GROWN  
DIAMOND ID REPORT**

December 6, 2022  
IGI Report Number **LG559275416**  
**ROUND BRILLIANT**  
**5.37 - 5.39 X 3.41 MM**  
Carat Weight 0.61 CARAT  
Color Grade E  
Clarity Grade IF  
Cut Grade EXCELLENT  
Polish EXCELLENT  
Symmetry EXCELLENT  
Fluorescence NONE  
Inscription(s) LABGROWN (IGI) LG559275416

Comments: As Grown - No indication of post-growth treatment.  
This Laboratory Grown Diamond was created by High Pressure High Temperature (HPHT) growth process.  
Type II

THIS DOCUMENT WAS PRODUCED WITH THE FOLLOWING SECURITY MEASURES: SPECIAL DOCUMENT PAPER, INK SCREENS, WATERMARK, BACKGROUND DESIGN, HOLOGRAM AND OTHER SECURITY FEATURES NOT LISTED AND DO EXCEED DOCUMENT SECURITY INDUSTRY GUIDELINES.

For terms & conditions and to verify this report, please visit [www.igi.org](http://www.igi.org)