



ELECTRONIC COPY

LABORATORY GROWN DIAMOND REPORT

January 2, 2023
IGI Report Number LG559292192
Description LABORATORY GROWN DIAMOND
Shape and Cutting Style ROUND BRILLIANT
Measurements 6.84 - 6.87 X 4.13 MM

GRADING RESULTS

Carat Weight 1.18 CARAT
Color Grade F
Clarity Grade VS 1
Cut Grade IDEAL

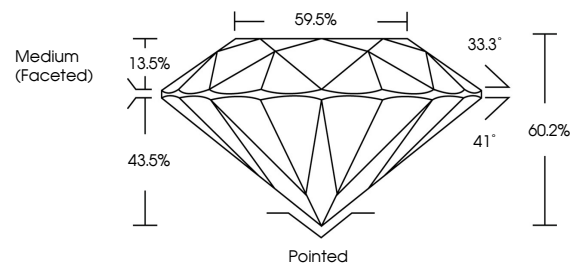
ADDITIONAL GRADING INFORMATION

Polish EXCELLENT
Symmetry EXCELLENT
Fluorescence NONE
Inscription(s) LABGROWN IGI LG559292192

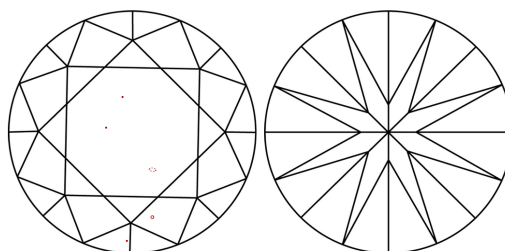
Comments: HEARTS & ARROWS
This Laboratory Grown Diamond was created by Chemical Vapor Deposition (CVD) growth process and may include post-growth treatment.
Type IIa

LG559292192

PROPORTIONS



CLARITY CHARACTERISTICS



KEY TO SYMBOLS

Red symbols indicate internal characteristics.
Green symbols indicate external characteristics.

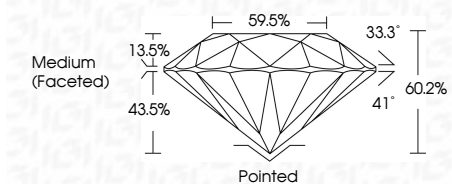


www.igi.org

January 2, 2023
IGI Report Number LG559292192
Description LABORATORY GROWN DIAMOND
Shape and Cutting Style ROUND BRILLIANT
Measurements 6.84 - 6.87 X 4.13 MM

GRADING RESULTS

Carat Weight 1.18 CARAT
Color Grade F
Clarity Grade VS 1
Cut Grade IDEAL



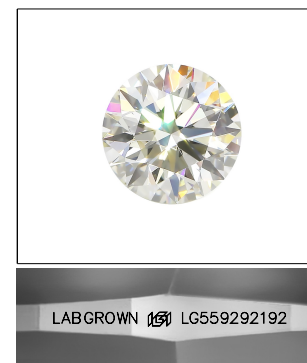
ADDITIONAL GRADING INFORMATION

Polish EXCELLENT
Symmetry EXCELLENT
Fluorescence NONE
Inscription(s) LABGROWN IGI LG559292192

Comments: HEARTS & ARROWS
This Laboratory Grown Diamond was created by Chemical Vapor Deposition (CVD) growth process and may include post-growth treatment.
Type IIa

GRADING SCALES

Table with 2 columns: COLOR GRADING SCALE and CLARITY (10x) GRADING SCALE. Rows include color grades (CL, NC, FT, VLT, LT) and clarity grades (FL, IF, VVS, VS, SI, I).



LABGROWN IGI LG559292192

LASERSCRIBE SM

Sample Image Used



IGI

January 2, 2023
IGI Report No. LG559292192
ROUND BRILLIANT
6.84 - 6.87 X 4.13 MM
Carat Weight 1.18 CARAT
Color Grade F
Clarity Grade VS 1
Cut Grade IDEAL
Depth 60.2%
Table 59.5%
Girdle Medium (Faceted)
Culet Pointed
Polish EXCELLENT
Symmetry EXCELLENT
Fluorescence NONE
Inscription(s) LABGROWN IGI LG559292192
Comments: HEARTS & ARROWS
This Laboratory Grown Diamond was created by Chemical Vapor Deposition (CVD) growth process and may include post-growth treatment.
Type IIa