



ELECTRONIC COPY

LABORATORY GROWN DIAMOND REPORT

LG559293313

December 30, 2022
IGI Report Number **LG559293313**

Description **LABORATORY GROWN
DIAMOND**
Shape and Cutting Style **ROUND BRILLIANT**
Measurements **8.94 - 9.00 X 5.45 MM**

GRADING RESULTS

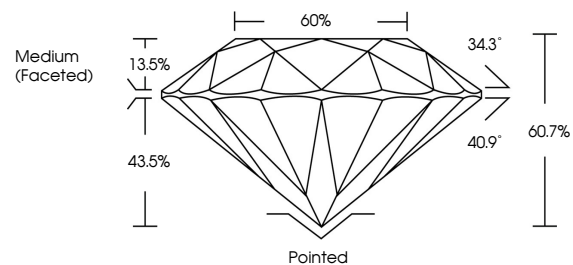
Carat Weight **2.70 CARATS**
Color Grade **F**
Clarity Grade **SI 1**
Cut Grade **EXCELLENT**

ADDITIONAL GRADING INFORMATION

Polish **EXCELLENT**
Symmetry **EXCELLENT**
Fluorescence **NONE**
Inscription(s) **LABGROWN (LGI) LG559293313**

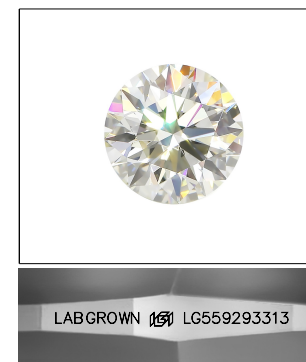
Comments: HEARTS & ARROWS
This Laboratory Grown Diamond was created by
Chemical Vapor Deposition (CVD) growth process and
may include post-growth treatment.
Type IIa

PROPORTIONS



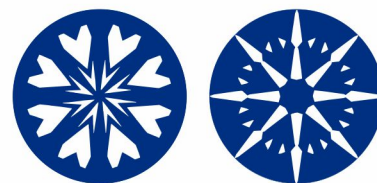
GRADING SCALES

COLOR GRADING SCALE	CL	NC	FT	VLT	LT
	COLORLESS D-F	NEAR COLORLESS G-J	FAINT K-M	VERY LIGHT N-R	LIGHT S-Z
CLARITY (10x) GRADING SCALE	FL	VVS	VS	SI	I
	FLAWLESS INTERNALLY FLAWLESS	VERY VERY SLIGHTLY INCLUDED	VERY SLIGHTLY INCLUDED	SLIGHTLY INCLUDED	INCLUDED



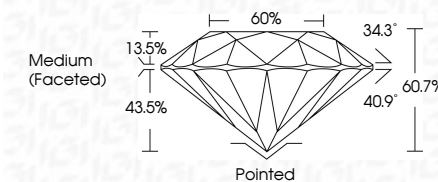
LASERSCRIBESM

Sample Image Used



www.igi.org

December 30, 2022
IGI Report Number **LG559293313**
Description **LABORATORY GROWN
DIAMOND**
Shape and Cutting Style **ROUND BRILLIANT**
Measurements **8.94 - 9.00 X 5.45 MM**
GRADING RESULTS
Carat Weight **2.70 CARATS**
Color Grade **F**
Clarity Grade **SI 1**
Cut Grade **EXCELLENT**



ADDITIONAL GRADING INFORMATION

Polish **EXCELLENT**
Symmetry **EXCELLENT**
Fluorescence **NONE**
Inscription(s) **LABGROWN (LGI) LG559293313**

Comments: HEARTS & ARROWS
This Laboratory Grown Diamond was created by
Chemical Vapor Deposition (CVD) growth process and
may include post-growth treatment.
Type IIa



December 30, 2022	IGI Report No. LG559293313	ROUND BRILLIANT	8.94 - 9.00 X 5.45 MM	Carat Weight	2.70 CARATS	Color Grade	F	Clarity Grade	SI 1	Cut Grade	EXCELLENT	Depth	60.7%	Table	60%	Grade	Medium (Faceted)	Culet	Pointed	Polish	EXCELLENT	Symmetry	EXCELLENT	Fluorescence	NONE	Inscription(s)	LABGROWN (LGI) LG559293313	Comments: HEARTS & ARROWS This Laboratory Grown Diamond was created by Chemical Vapor Deposition (CVD) growth process and may include post-growth treatment. Type IIa
-------------------	----------------------------	-----------------	-----------------------	--------------	-------------	-------------	---	---------------	------	-----------	-----------	-------	-------	-------	-----	-------	------------------	-------	---------	--------	-----------	----------	-----------	--------------	------	----------------	----------------------------	---

