



**INTERNATIONAL
GEMOLOGICAL
INSTITUTE**

ELECTRONIC COPY

**LABORATORY GROWN
DIAMOND REPORT**

LG559293396

**IGI LABORATORY GROWN
DIAMOND ID REPORT**

December 30, 2022

IGI Report Number **LG559293396**

PEAR BRILLIANT

6.36 X 4.03 X 2.55 MM

Carat Weight	0.39 CARAT
Color Grade	E
Clarity Grade	SI 1
Cut Grade	VERY GOOD
Polish	EXCELLENT
Symmetry	EXCELLENT
Fluorescence	NONE
Inscription(s)	LABGROWN (IGI) LG559293396

Comments: This Laboratory Grown Diamond was created by Chemical Vapor Deposition (CVD) growth process and may include post-growth treatment.Type IIa

LABORATORY GROWN DIAMOND REPORT

IGI LABORATORY GROWN DIAMOND IDENTIFICATION REPORT

December 30, 2022

IGI Report Number **LG559293396**

Description **LABORATORY GROWN DIAMOND**

Shape and Cutting Style **PEAR BRILLIANT**

Measurements **6.36 X 4.03 X 2.55 MM**

GRADING RESULTS

Carat Weight **0.39 CARAT**

Color Grade **E**

Clarity Grade **SI 1**

Cut Grade **VERY GOOD**

ADDITIONAL GRADING INFORMATION

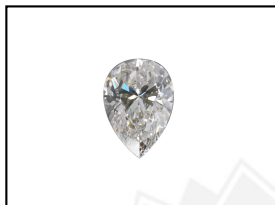
Polish **EXCELLENT**

Symmetry **EXCELLENT**

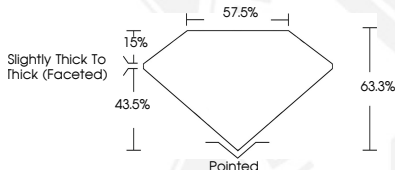
Fluorescence **NONE**

Inscription(s) **LABGROWN (IGI) LG559293396**

Comments: This Laboratory Grown Diamond was created by Chemical Vapor Deposition (CVD) growth process and may include post-growth treatment.
Type IIa



LASERSCRIBESM
Sample Images Used



**IGI LABORATORY GROWN
DIAMOND ID REPORT**

December 30, 2022

IGI Report Number **LG559293396**

PEAR BRILLIANT

6.36 X 4.03 X 2.55 MM

Carat Weight	0.39 CARAT
Color Grade	E
Clarity Grade	SI 1
Cut Grade	VERY GOOD
Polish	EXCELLENT
Symmetry	EXCELLENT
Fluorescence	NONE
Inscription(s)	LABGROWN (IGI) LG559293396

Comments: This Laboratory Grown Diamond was created by Chemical Vapor Deposition (CVD) growth process and may include post-growth treatment.Type IIa

THIS DOCUMENT WAS PRODUCED WITH THE FOLLOWING SECURITY MEASURES: SPECIAL DOCUMENT PAPER, INK SCREENS, WATERMARK, BACKGROUND DESIGN, HOLOGRAM AND OTHER SECURITY FEATURES NOT LISTED AND DO EXCEED DOCUMENT SECURITY INDUSTRY GUIDELINES.

For terms & conditions and to verify this report, please visit www.igi.org