



**INTERNATIONAL
GEMOLOGICAL
INSTITUTE**

ELECTRONIC COPY

**LABORATORY GROWN
DIAMOND REPORT**

LG559293402

**IGI LABORATORY GROWN
DIAMOND ID REPORT**

December 30, 2022
IGI Report Number **LG559293402**
OVAL BRILLIANT
7.22 X 5.15 X 3.27 MM
Carat Weight 0.78 CARAT
Color Grade E
Clarity Grade VVS 2
Cut Grade VERY GOOD
Polish EXCELLENT
Symmetry EXCELLENT
Fluorescence NONE
Inscription(s) LABGROWN (IGI) LG559293402

Comments: This Laboratory Grown Diamond was created by Chemical Vapor Deposition (CVD) growth process and may include post-growth treatment.Type IIa

LABORATORY GROWN DIAMOND REPORT

IGI LABORATORY GROWN DIAMOND IDENTIFICATION REPORT

December 30, 2022
IGI Report Number LG559293402
Description LABORATORY GROWN DIAMOND
Shape and Cutting Style OVAL BRILLIANT
Measurements 7.22 X 5.15 X 3.27 MM

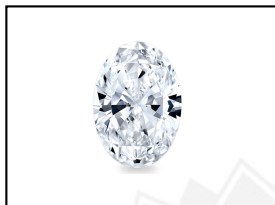
GRADING RESULTS

Carat Weight 0.78 CARAT
Color Grade E
Clarity Grade VVS 2
Cut Grade VERY GOOD

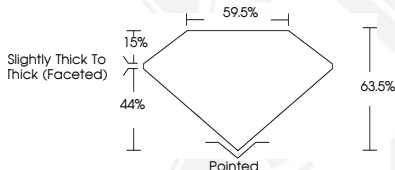
ADDITIONAL GRADING INFORMATION

Polish EXCELLENT
Symmetry EXCELLENT
Fluorescence NONE
Inscription(s) LABGROWN (IGI) LG559293402

Comments: This Laboratory Grown Diamond was created by Chemical Vapor Deposition (CVD) growth process and may include post-growth treatment.
Type IIa



LASERSCRIBESM
Sample Images Used



**IGI LABORATORY GROWN
DIAMOND ID REPORT**

December 30, 2022
IGI Report Number **LG559293402**
OVAL BRILLIANT
7.22 X 5.15 X 3.27 MM
Carat Weight 0.78 CARAT
Color Grade E
Clarity Grade VVS 2
Cut Grade VERY GOOD
Polish EXCELLENT
Symmetry EXCELLENT
Fluorescence NONE
Inscription(s) LABGROWN (IGI) LG559293402

Comments: This Laboratory Grown Diamond was created by Chemical Vapor Deposition (CVD) growth process and may include post-growth treatment.Type IIa

THIS DOCUMENT WAS PRODUCED WITH THE FOLLOWING SECURITY MEASURES: SPECIAL DOCUMENT PAPER, INK SCREENS, WATERMARK, BACKGROUND DESIGN, HOLOGRAM AND OTHER SECURITY FEATURES NOT LISTED AND DO EXCEED DOCUMENT SECURITY INDUSTRY GUIDELINES.

For terms & conditions and to verify this report, please visit www.igi.org