



**INTERNATIONAL  
GEMOLOGICAL  
INSTITUTE**

**ELECTRONIC COPY**

# LABORATORY GROWN DIAMOND REPORT

|                         |                             |
|-------------------------|-----------------------------|
| January 2, 2023         |                             |
| IGI Report Number       | LG559293479                 |
| Description             | LABORATORY GROWN<br>DIAMOND |
| Shape and Cutting Style | CUSHION MODIFIED BRILLIANT  |
| Measurements            | 9.94 X 8.10 X 5.57 MM       |
| GRADING RESULTS         |                             |
| Carat Weight            | 3.45 CARATS                 |
| Color Grade             | I                           |
| Clarity Grade           | VVS 2                       |
| Cut Grade               | VERY GOOD                   |

### ADDITIONAL GRADING INFORMATION

|              |           |
|--------------|-----------|
| Polish       | EXCELLENT |
| Symmetry     | EXCELLENT |
| Fluorescence | NONE      |

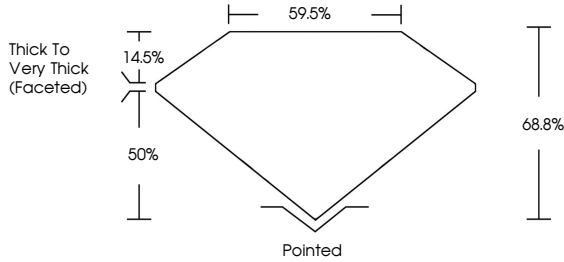
Inscription(s) LABGROWN  LG559293479

Comments: This Laboratory Grown Diamond was created by Chemical Vapor Deposition (CVD) growth process and may include post-growth treatment.  
Type IIa

# LABORATORY GROWN DIAMOND REPORT

LG559293479  
Report verification at [igi.org](https://igi.org)

## PROPORTIONS



# LABORATORY GROWN DIAMOND REPORT

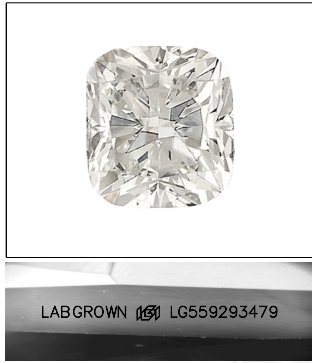
## GRADING SCALES

## CLARITY

| IF                     | VVS <sup>1-2</sup>             | VS <sup>1-2</sup>         | SI <sup>1-2</sup>    | I <sup>1-3</sup> |
|------------------------|--------------------------------|---------------------------|----------------------|------------------|
| Internally<br>Flawless | Very Very<br>Slightly Included | Very<br>Slightly Included | Slightly<br>Included | Included         |

**COLOR**

D E F G H I J Faint Very Light Light

LASERSCRIBE<sup>SM</sup>

Sample Image Used

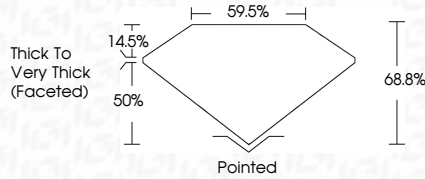


© IGI 2020, International Gemological Institute

FD - 10 20

## LABORATORY GROWN DIAMOND REPORT

|                         |                               |
|-------------------------|-------------------------------|
| January 2, 2023         |                               |
| IGI Report Number       | LG559293479                   |
| Description             | LABORATORY GROWN<br>DIAMOND   |
| Shape and Cutting Style | CUSHION MODIFIED<br>BRILLIANT |
| Measurements            | 9.94 X 8.10 X 5.57 MM         |
| GRADING RESULTS         |                               |
| Carat Weight            | 3.45 CARATS                   |
| Color Grade             | I                             |
| Clarity Grade           | VVS 2                         |
| Cut Grade               | VERY GOOD                     |



### ADDITIONAL GRADING INFORMATION

|                |                         |
|----------------|-------------------------|
| Polish         | EXCELLENT               |
| Symmetry       | EXCELLENT               |
| Fluorescence   | NONE                    |
| Inscription(s) | LABGROWN (G) LG55293479 |

Comments: This Laboratory Grown Diamond was created by Chemical Vapor Deposition (CVD) growth process and may include post-growth treatment.  
Type IIa



IGI

|                            |                            |                             |
|----------------------------|----------------------------|-----------------------------|
| January 2, 2023            | IGI Report No. G5557933479 | 3.45 CARATS                 |
| CUSHION MODIFIED BRILLIANT | 9.94 X 8.10 X 5.57 MM      | WS 2                        |
|                            | Color Grade                | WS 2                        |
|                            | Clarity Grade              | VERY GOOD                   |
|                            | Cut Grade                  | 64.8%                       |
|                            | Depth                      | 59.5%                       |
|                            | Table                      | Thick to Very Thick (Faced) |
|                            | Girdle                     | Pointed                     |
|                            | Culet                      | EXCELLENT                   |
|                            | Polish                     | EXCELLENT                   |
|                            | Symmetry                   | NONE                        |
|                            | Fluorescence               | LARGELY NON-FLUORESCENT     |
|                            | Inscription(s)             | G5557933479                 |

**Comments:**  
This Laboratory Grown Diamond was created by Chemical Vapor Deposition (CVD) growth process and may include post-growth treatment.  
Type IIIa

**www.igi.org**



THIS DOCUMENT WAS PRODUCED WITH THE FOLLOWING SECURITY MEASURES: SPECIAL DOCUMENT PAPER, INK SCREENS, WATERMARK, BACKGROUND DESIGNS, HOLOGRAM AND OTHER SECURITY FEATURES NOT LISTED AND DO EXCEED DOCUMENT SECURITY INDUSTRY GUIDELINES