



ELECTRONIC COPY

LG559293513

Report verification at igi.org

LABORATORY GROWN DIAMOND REPORT

December 30, 2022
IGI Report Number **LG559293513**
Description **LABORATORY GROWN
DIAMOND**
Shape and Cutting Style **CUSHION MODIFIED BRILLIANT**
Measurements **7.95 X 6.79 X 4.58 MM**

GRADING RESULTS

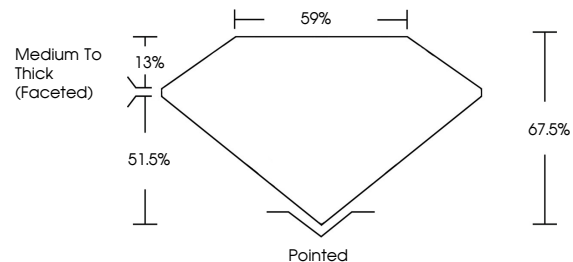
Carat Weight **1.84 CARAT**
Color Grade **F**
Clarity Grade **SI 1**
Cut Grade **VERY GOOD**

ADDITIONAL GRADING INFORMATION

Polish **EXCELLENT**
Symmetry **EXCELLENT**
Fluorescence **NONE**
Inscription(s) **LABGROWN (LGI) LG559293513**

Comments: This Laboratory Grown Diamond was created by Chemical Vapor Deposition (CVD) growth process and may include post-growth treatment. Type IIa

PROPORTIONS



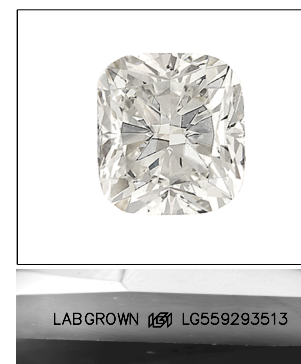
GRADING SCALES

CLARITY

IF	VVS ¹⁻²	VS ¹⁻²	SI ¹⁻²	I ¹⁻³
Internally Flawless	Very Very Slightly Included	Very Slightly Included	Slightly Included	Included

COLOR

D	E	F	G	H	I	J	Faint	Very Light	Light
---	---	---	---	---	---	---	-------	------------	-------



LASERSCRIBESM

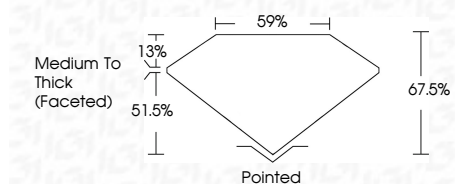
Sample Image Used



December 30, 2022
IGI Report Number **LG559293513**
Description **LABORATORY GROWN
DIAMOND**
Shape and Cutting Style **CUSHION MODIFIED
BRILLIANT**
Measurements **7.95 X 6.79 X 4.58 MM**

GRADING RESULTS

Carat Weight **1.84 CARAT**
Color Grade **F**
Clarity Grade **SI 1**
Cut Grade **VERY GOOD**



ADDITIONAL GRADING INFORMATION

Polish **EXCELLENT**
Symmetry **EXCELLENT**
Fluorescence **NONE**
Inscription(s) **LABGROWN (LGI) LG559293513**

Comments: This Laboratory Grown Diamond was created by Chemical Vapor Deposition (CVD) growth process and may include post-growth treatment. Type IIa



IGI

December 30, 2022
IGI Report No LG559293513
CUSHION MODIFIED BRILLIANT
7.95 X 6.79 X 4.58 MM
1.84 CARAT
Color Grade **F**
Clarity Grade **SI 1**
Cut Grade **VERY GOOD**
Depth **67.5%**
Table **59%**
Girdle **Medium To Thick (Faceted)**
Culet **Pointed**
Polish **EXCELLENT**
Symmetry **EXCELLENT**
Fluorescence **NONE**
Inscriptions(s) **LABGROWN (LGI) LG559293513**

Comments: This Laboratory Grown Diamond was created by Chemical Vapor Deposition (CVD) growth process and may include post-growth treatment. Type IIa