



**INTERNATIONAL  
GEMOLOGICAL  
INSTITUTE**

**ELECTRONIC COPY**

**LABORATORY GROWN  
DIAMOND REPORT**

**LG559293586**

**IGI LABORATORY GROWN  
DIAMOND ID REPORT**

January 5, 2023  
IGI Report Number **LG559293586**  
**PEAR BRILLIANT**  
**8.23 X 5.14 X 3.27 MM**  
Carat Weight 0.82 CARAT  
Color Grade E  
Clarity Grade VVS 2  
Cut Grade VERY GOOD  
Polish VERY GOOD  
Symmetry EXCELLENT  
Fluorescence NONE  
Inscription(s) LABGROWN (IGI) LG559293586

Comments: This Laboratory Grown Diamond was created by Chemical Vapor Deposition (CVD) growth process and may include post-growth treatment.Type IIa

**LABORATORY GROWN DIAMOND REPORT**

**IGI LABORATORY GROWN DIAMOND IDENTIFICATION REPORT**

January 5, 2023  
IGI Report Number LG559293586  
Description LABORATORY GROWN DIAMOND  
Shape and Cutting Style PEAR BRILLIANT  
Measurements 8.23 X 5.14 X 3.27 MM

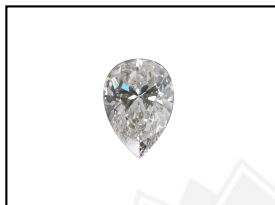
**GRADING RESULTS**

Carat Weight 0.82 CARAT  
Color Grade E  
Clarity Grade VVS 2  
Cut Grade VERY GOOD

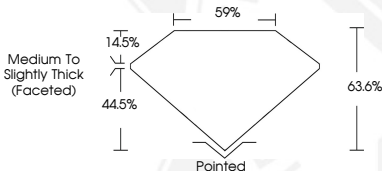
**ADDITIONAL GRADING INFORMATION**

Polish VERY GOOD  
Symmetry EXCELLENT  
Fluorescence NONE  
Inscription(s) LABGROWN (IGI) LG559293586

Comments: This Laboratory Grown Diamond was created by Chemical Vapor Deposition (CVD) growth process and may include post-growth treatment.  
Type IIa



**LASERSCRIBE<sup>SM</sup>**  
Sample Images Used



**IGI LABORATORY GROWN  
DIAMOND ID REPORT**

January 5, 2023  
IGI Report Number **LG559293586**  
**PEAR BRILLIANT**  
**8.23 X 5.14 X 3.27 MM**  
Carat Weight 0.82 CARAT  
Color Grade E  
Clarity Grade VVS 2  
Cut Grade VERY GOOD  
Polish VERY GOOD  
Symmetry EXCELLENT  
Fluorescence NONE  
Inscription(s) LABGROWN (IGI) LG559293586

Comments: This Laboratory Grown Diamond was created by Chemical Vapor Deposition (CVD) growth process and may include post-growth treatment.Type IIa

THIS DOCUMENT WAS PRODUCED WITH THE FOLLOWING SECURITY MEASURES: SPECIAL DOCUMENT PAPER, INK SCREENS, WATERMARK, BACKGROUND DESIGN, HOLOGRAM AND OTHER SECURITY FEATURES NOT LISTED AND DO EXCEED DOCUMENT SECURITY INDUSTRY GUIDELINES.

For terms & conditions and to verify this report, please visit [www.igi.org](http://www.igi.org)