



ELECTRONIC COPY

LABORATORY GROWN DIAMOND REPORT

LG559294034

January 9, 2023
IGI Report Number LG559294034

Description LABORATORY GROWN DIAMOND
Shape and Cutting Style OVAL BRILLIANT
Measurements 11.82 X 8.30 X 5.24 MM

GRADING RESULTS

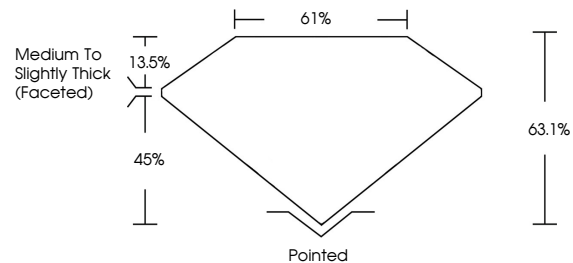
Carat Weight 3.17 CARATS
Color Grade F
Clarity Grade SI 1

ADDITIONAL GRADING INFORMATION

Polish EXCELLENT
Symmetry EXCELLENT
Fluorescence NONE
Inscription(s) LABGROWN IGI LG559294034

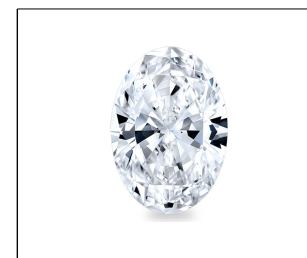
Comments: This Laboratory Grown Diamond was created by Chemical Vapor Deposition (CVD) growth process and may include post-growth treatment. Type IIa

PROPORTIONS



GRADING SCALES

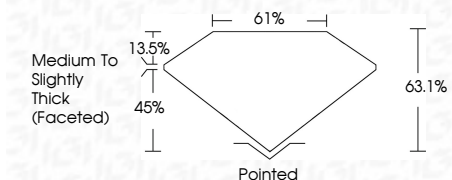
Table with 2 rows and 5 columns showing color grading scales (CL, NC, FT, VLT, LT) and clarity (10x) grading scales (FL, IF, VVS, VS, SI, I).



LASERSCRIBE SM

Sample Image Used

January 9, 2023
IGI Report Number LG559294034
Description LABORATORY GROWN DIAMOND
Shape and Cutting Style OVAL BRILLIANT
Measurements 11.82 X 8.30 X 5.24 MM
GRADING RESULTS
Carat Weight 3.17 CARATS
Color Grade F
Clarity Grade SI 1



ADDITIONAL GRADING INFORMATION

Polish EXCELLENT
Symmetry EXCELLENT
Fluorescence NONE
Inscription(s) LABGROWN IGI LG559294034

Comments: This Laboratory Grown Diamond was created by Chemical Vapor Deposition (CVD) growth process and may include post-growth treatment. Type IIa



IGI



January 9, 2023
IGI Report No. LG559294034
OVAL BRILLIANT
Carat Weight 3.17 CARATS
Color Grade F
Clarity Grade SI 1
Depth 63.1%
Table 61%
Girdle Medium To Slightly Thick (Faceted)
Culet Pointed
Polish EXCELLENT
Symmetry EXCELLENT
Fluorescence NONE
Inscription(s) LABGROWN IGI LG559294034
Comments: This Laboratory Grown Diamond was created by Chemical Vapor Deposition (CVD) growth process and may include post-growth treatment. Type IIa