



ELECTRONIC COPY

LABORATORY GROWN DIAMOND REPORT

LG559294197

January 10, 2023
IGI Report Number **LG559294197**

Description **LABORATORY GROWN
DIAMOND**

Shape and Cutting Style **CUSHION MODIFIED BRILLIANT**

Measurements **9.65 X 8.28 X 5.45 MM**

GRADING RESULTS

Carat Weight **3.32 CARATS**

Color Grade **H**

Clarity Grade **VS 1**

ADDITIONAL GRADING INFORMATION

Polish **EXCELLENT**

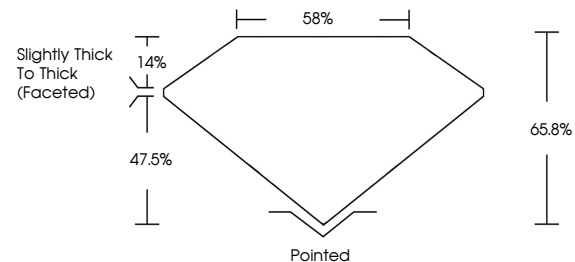
Symmetry **EXCELLENT**

Fluorescence **NONE**

Inscription(s) **LABGROWN IGI LG559294197**

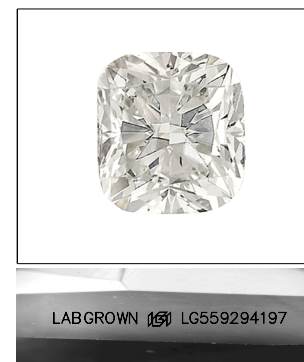
Comments: This Laboratory Grown Diamond was created by Chemical Vapor Deposition (CVD) growth process and may include post-growth treatment. Type IIa

PROPORTIONS



GRADING SCALES

COLOR GRADING SCALE	CL	NC	FT	VL	LT	
	COLORLESS D-F	NEAR COLORLESS G-J	FAINT K-M	VERY LIGHT N-R	LIGHT S-Z	
CLARITY (10x) GRADING SCALE	FL	IF	VVS	VS	SI	I
	FLAWLESS INTERNALLY FLAWLESS	VERY VERY SLIGHTLY INCLUDED	VERY SLIGHTLY INCLUDED	SLIGHTLY INCLUDED	INCLUDED	



LASERSCRIBESM

Sample Image Used



January 10, 2023

IGI Report Number **LG559294197**

Description **LABORATORY GROWN
DIAMOND**

Shape and Cutting Style **CUSHION MODIFIED
BRILLIANT**

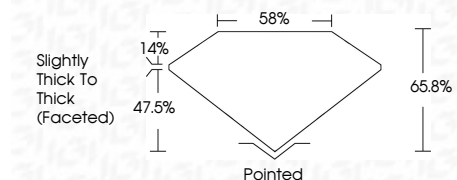
Measurements **9.65 X 8.28 X 5.45 MM**

GRADING RESULTS

Carat Weight **3.32 CARATS**

Color Grade **H**

Clarity Grade **VS 1**



ADDITIONAL GRADING INFORMATION

Polish **EXCELLENT**

Symmetry **EXCELLENT**

Fluorescence **NONE**

Inscription(s) **LABGROWN IGI LG559294197**

Comments: This Laboratory Grown Diamond was created by Chemical Vapor Deposition (CVD) growth process and may include post-growth treatment. Type IIa



IGI

January 10, 2023	IGI Report No. LG559294197	Color Grade	H	Culet	Pointed
	CUSHION MODIFIED BRILLIANT	Clarity Grade	VS 1	Polish	EXCELLENT
	9.65 X 8.28 X 5.45 MM	Depth	65.8%	Symmetry	EXCELLENT
	Carat Weight	Table	58%	Fluorescence	NONE
	3.32 CARATS	Grade	Slightly Thick To Thick (Faceted)	Inscription(s)	LABGROWN IGI LG559294197
				Comments:	This Laboratory Grown Diamond was created by Chemical Vapor Deposition (CVD) growth process and may include post-growth treatment. Type IIa